

Conspiracy Mentality and Political Orientation across 26 countries

Roland Imhoff<sup>1\*</sup>, Felix Zimmer<sup>1</sup>, Olivier Klein<sup>2</sup>, João H. C. António<sup>3</sup>, Maria Babinska<sup>4</sup>, Adrian Bangerter<sup>5</sup>, Michal Bilewicz<sup>4</sup>, Nebojša Blanuša<sup>6</sup>, Kosta Bovan<sup>6</sup>, Rumena Bužarovska<sup>7</sup> Aleksandra Cichocka<sup>8,9</sup>, Sylvain Delouvée<sup>10</sup>, Karen M. Douglas<sup>8</sup>, Asbjørn Dyrendal<sup>11</sup>, Tom Etienne<sup>12</sup>, Biljana Gjoneska<sup>13</sup>, Sylvie Graf<sup>14,15</sup>, Estrella Gualda<sup>16</sup>, Gilad Hirschberger<sup>17</sup>, Anna Kende<sup>18</sup>, Yordan Kutiyanski<sup>12</sup>, Peter Krekó<sup>18</sup>, Andre Krouwel<sup>19</sup>, Silvia Mari<sup>20</sup>, Jasna Milošević Dorđević<sup>21</sup>, Maria Serena Panasiti<sup>22</sup>, Myrto Pantazi<sup>23</sup>, Ljupcho Petkovski<sup>24</sup>, Giuseppina Porciello<sup>22</sup>, André Rabelo<sup>25</sup>, Raluca Radu<sup>26</sup>, Florin A. Sava<sup>27</sup>, Michael Schepisi<sup>22</sup>, Robbie M. Sutton<sup>8</sup>, Viren Swami<sup>28,29</sup>, Hulda Thórisdóttir<sup>30</sup>, Vladimir Turjačanin<sup>31</sup>, Pascal Wagner-Egger<sup>32</sup>, Iris Žeželj<sup>33</sup>, & Jan-Willem van Prooijen<sup>19</sup>

<sup>1</sup>Johannes Gutenberg University Mainz, Germany

<sup>2</sup>Université libre de Bruxelles, Belgium

<sup>3</sup>Universidade Católica Portuguesa, CIEP, Portugal

<sup>4</sup>University of Warsaw, Poland

<sup>5</sup>University of Neuchâtel, Switzerland

<sup>6</sup>University of Zagreb, Croatia

<sup>7</sup>University Ss Cyril and Methodius, Skopje, North Macedonia

<sup>8</sup>University of Kent, United Kingdom

<sup>9</sup>Nicolaus Copernicus University, Poland

<sup>10</sup>Université de Rennes, France

<sup>11</sup>Norwegian University of Science and Technology, Norway

<sup>12</sup>Research Institute Kieskompas

<sup>13</sup>Macedonian Academy of Sciences and Arts, Skopje, North Macedonia

<sup>14</sup>University of Bern, Bern, Switzerland

<sup>15</sup>Czech Academy of Sciences, Brno, Czech Republic

<sup>16</sup>Universidad de Huelva, Spain

- <sup>17</sup>Interdisciplinary Center (IDC), Herzliya, Israel
- <sup>18</sup>ELTE, Eötvös Loránd University, Budapest, Hungary
- <sup>19</sup>Vrije Universiteit Amsterdam, The Netherlands
- <sup>20</sup>University of Milano - Bicocca, Italy
- <sup>21</sup>Singidunum University, Belgrade, Serbia
- <sup>22</sup>Sapienza University of Rome; IRCCS Santa Lucia Foundation of Rome, Italy
- <sup>23</sup>University of Oxford, Oxford, United Kingdom
- <sup>24</sup>Macedonian Center for European Training, Skopje, North Macedonia
- <sup>25</sup>Universidade de Brasília, Brazil
- <sup>26</sup>University of Bucharest, Bucharest, Romania
- <sup>27</sup>West University of Timisoara, Timisoara, Romania
- <sup>28</sup>Anglia Ruskin University, Cambridge, United Kingdom
- <sup>29</sup>Perdana University, Kuala Lumpur, Malaysia
- <sup>30</sup>University of Iceland, Iceland
- <sup>31</sup>University of Banja Luka, Bosnia
- <sup>32</sup>Université de Fribourg, Switzerland
- <sup>33</sup>University of Belgrade, Serbia

\* to whom correspondence should be addressed at [roland.imhoff@uni-mainz.de](mailto:roland.imhoff@uni-mainz.de)

### Abstract

People differ in their general tendency to endorse conspiracy theories (i.e., conspiracy mentality). Previous research yielded inconsistent findings on the relationship between conspiracy mentality and political orientation, showing a greater conspiracy mentality either among the political right (a linear relation), or among both the left and right extremes (a curvilinear relation). We revisited this relationship across two studies spanning 26 countries (combined  $N=104,253$ ) and found overall evidence for both linear and quadratic relations, even though small and heterogeneous across countries. We also observed stronger support for conspiracy mentality among voters of opposition parties (i.e., those deprived of political control). Nonetheless, the quadratic effect of political orientation remained significant when adjusting for political control deprivation. We conclude that conspiracy mentality is associated with extreme left- and especially extreme right-wing beliefs, and that this non-linear relation may be strengthened by, but is not reducible to, deprivation of political control.

*Keywords:* conspiracy theories, conspiracy beliefs, conspiracy mentality, political orientation, political extremism, Europe, curvilinear, U-shaped function

## Conspiracy Mentality and Political Orientation across 26 countries

In the wake of major events, conspiracy theories predictably surge across the Internet – whether these are terrorist attacks<sup>1</sup>, global pandemics such as the COVID-19 outbreak<sup>2,3</sup>, or presidential elections<sup>4</sup>. Conspiracy theories, defined as beliefs that a group of actors are colluding in secret to reach a malevolent goal<sup>5,6</sup>, are common across times, cultures, and populations<sup>7,8</sup>. Accumulating research has revealed that a reliable predictor of belief in one conspiracy theory is the belief in another conspiracy theory<sup>1,9-11</sup>. It therefore appears that people differ in their predisposition to explain events as conspiracies, which is sometimes referred to as “conspiracy mentality” or “conspiracy mindset”<sup>12-14</sup>. The conspiracy mindset is closely associated with belief in a wide range of existing specific conspiracy theories, as well as the endorsement of conspiracy theories created by researchers for experimental purposes<sup>15</sup>. It is different from concrete conspiracy beliefs in that it taps into the general propensity to suspect conspiracies at play, uncontaminated by concrete events, actors or contexts.

The political realm in particular is one key area where conspiracy beliefs are salient and thriving<sup>16</sup>. For instance, conspiracy theories are intrinsically connected to the rhetoric of populist political leaders who arguably exploit conspiracy theories for strategic reasons<sup>17,18</sup>. Importantly, citizens’ belief in conspiracy theories predicts voting behavior and intentions<sup>19,20</sup> and non-normative political action<sup>21,22</sup>. Traditionally, conspiracy beliefs have been associated with authoritarian worldviews<sup>23,24</sup>, as exemplified by positive relations between conspiracy beliefs and right-wing authoritarianism<sup>25-27</sup>. Stripping a politically right-wing stance from the surplus meaning of authoritarianism (and its strong connection to traditions and authorities), many studies have found a linear relationship between self-reported political orientation and

conspiracy endorsement<sup>16,28,29</sup>, suggesting that conspiracy beliefs are more common at the political right than at the political left<sup>30-33</sup>.

In contrast to this simple linear relation, however, numerous findings point to a curvilinear relation between political orientation and endorsement of conspiracy theories, such that people at both political extremes endorse conspiracy theories more strongly than people in the political center do. Such a U-shaped function across the political spectrum was described for conspiracy beliefs in samples collected in the U.S., Netherlands<sup>34</sup>, Belgium<sup>35</sup> (for conspiracy theories targeting elite groups), Sweden<sup>36</sup>, Poland<sup>37</sup>, and Germany<sup>24,38</sup> (for conspiracy mentality). The fact that such a U-shaped function has so far been revealed in only a handful of countries that share a high degree of economic prosperity calls for further scrutiny and more thorough explanation.

One way to make sense of such a U-shaped relation between political orientation and conspiracy mentality is grounded in the content-based overlap between conspiracy beliefs and worldview explanations on the political extremes. This worldview explanation is based on the notion that extreme political movements at both the left and right share a common set of features<sup>39</sup>, which include a pronounced tendency to distrust and reject groups and ideas that differ from their own<sup>40-46</sup>. The left and right extremes share a worldview that centers on Manichaeism demonization of ideological outgroups, which are represented not only as wrong but as immoral and dangerous<sup>47</sup>. Conspiracy theories similarly represent outgroups as evil<sup>20</sup>, and are associated with Manichaeism views of history as a struggle between good and evil forces vying for control of societies<sup>20,48</sup>. Research on authoritarianism, a key antecedent of conspiracy beliefs, sometimes points to an authoritarianism symmetry hypothesis: authoritarian views in which dissent is not tolerated are observed both on the right and left-wing extremes<sup>49,50</sup>. Likewise, both

extreme positions show an affinity to a belief in simple solutions, which is also associated with conspiracy beliefs<sup>34</sup>. This worldview explanation, therefore, suggests that the curvilinear relation in which conspiracy mentality is associated with extreme political ideology, left or right, is more or less universal across national contexts. Indeed, across time and cultures, conspiracy theories are common in the discourse of extremist fringe groups independent of ideology (extreme left, extreme right, religious fundamentalism, and anti-technology)<sup>51</sup>.

There is, however, another reason to predict a U-shaped function, independent of worldview content, but as a reaction to perceived lack of political control. Political control deprivation can result from losing elections, so that one's political values are not represented by governing parties. The experience of lack of control, in general, stimulates a desire to make sense of the social environment<sup>52-54</sup>. More recently, this general effect has been called into question<sup>55</sup>, but there is strong evidence that political control deprivation, in particular, increases conspiracy theorizing<sup>16,56</sup>. When people feel locked out of power, they may be more motivated to endorse beliefs that delegitimize incumbent authorities and the outcomes of political processes<sup>57</sup>. Two recent US elections demonstrate the notion that conspiracy theories are for (political) losers<sup>58</sup>: After the election, supporters of the winning party showed weaker, and supporters of the defeated party stronger beliefs in election-related conspiracy theories<sup>59</sup>. Supporters of extreme parties may therefore endorse conspiracy theories because they are not represented in governmental decisions (at least in most Western countries).

This explanation, however, would suggest context dependency rather than universality. To the extent that parties from one of the extreme ends of the political continuum are in power or holding government positions, endorsement of conspiracy theories should be less pronounced among the supporters of these parties. This allows for the prediction that in countries with a far-

right government, conspiracy mentality should be particularly present on the political left (i.e., a negative linear relation), whereas in countries with a far-left government we would expect conspiracy theories particularly at the political right (a positive linear trend).

The present research sought to provide more definitive evidence regarding the nature, universality, and explanations of the relationship between political orientation and conspiracy mentality, the mindset that secret sinister forces are at play. As the conspiracy mentality questionnaire mentions no concrete agents or events, it assesses this worldview without being contaminated by political bias. Study 1 investigated the relationship between political orientation and conspiracy mentality in a large and unique dataset from 23 countries ( $N = 33,431$ ), allowing us to not only test the link between political orientation and conspiracy mentality in a more generalizable and fine-grained manner, but also to examine whether political control deprivation (one's political party excluded from government) can account for this link. A second study ( $N = 70,882$ ) complemented these analyses with larger samples from 13 European countries that allowed weighing data to match population-based distributions of age, gender, education and political leaning.

In both studies, we measured political orientation in two complementary ways. As a first approach, we measured participants' political orientation on a single item scale ranging from (extremely) left-wing to (extremely) right-wing<sup>60</sup>. Although a very brief measure, the single item is widely used in political psychology studies<sup>61,62</sup> yielding strong evidence of validity (e.g., predicting 80-90% of variance in voting behaviours<sup>63</sup>) and comparability for international research<sup>64</sup>.

While being common, economical, and intuitive, there are some caveats to relying exclusively on this self-placement approach on a single item. Subjective political orientation may

be susceptible to context-specific interpretations of the left-right spectrum<sup>65</sup> – what is considered left or right can differ across countries. “Left-wing” in the US might be “centric” in central Europe, and “right-of-center” in various Northern European countries. Moreover, the left-right continuum may be interpreted differently by citizens of different countries as referring to economic or cultural issues<sup>66</sup>. These issues might lead to differences between countries that are attributable to the interpretation of the scales rather than to actual political differences.

To address this limitation, it is desirable to triangulate findings involving self-reported political orientation with a measure that is less susceptible to self-referencing and differing standards. As a second approach, we thus relied on voting intentions for political parties. These choices have no scale anchoring issues and may be more intuitively accessible to participants than their self-positioning on a Likert-type scale. Connecting voting intentions to international expert coding<sup>67</sup> (see below) allowed us to differentiate between different aspects of the left-right continuum across different political contexts.

## Results

For both studies we dropped one item (albeit different ones, see supplement S2 and Supplementary Tables 3 and 4) from the Conspiracy Mentality scale to improve measurement invariance and achieve both configural and metric invariance for the 4-item scale, which was computed by averaging the four remaining items ( $\alpha = .82$  in Study 1; ranging from .62 in Macedonia to .89 in Poland;  $\alpha = .83$  in Study 2). Parallel analyses with the 5-item measure ( $\alpha = .84$ ) are available for both studies in the online supplement (S7), but do not yield any different results. This scale should tap into respondents’ general propensity to accept conspiracy theories. To test this, we had inquired about the agreements with context specific conspiracy theories in Study 1. Across countries (random effect meta-analytic models with strong heterogeneity;  $I^2$ s >

.96) conspiracy mentality correlated positively with left-leaning,  $r = .37, p < .001, 95\% \text{ CI } [.28; .45]$ , neutral,  $r = .42, p < .001, 95\% \text{ CI } [.33; .51]$ , and right-leaning conspiracy theories,  $r = .29, p < .001, 95\% \text{ CI } [.23; .35]$  (see Supplementary Figures 1 to 3 for forest plots). As the arguably more adequate approach, we aggregated agreement with the diverse conspiracy theories in each country to tap into the general propensity to endorse specific conspiracy beliefs. This aggregate correlated substantially with our generic conspiracy measure that excludes any reference to concrete events or actors,  $r = .49, p < .001, 95\% \text{ CI } [.41; .56]$ . Correcting for attenuation due to imperfect reliability of both measures yielded a corrected average of  $r = .73, p < .001, 95\% \text{ CI } [.63; .82]$  (Supplementary Table 5).

### ***Analyses based on self-reported political orientation***

To address the question of whether conspiracy mentality is particularly pronounced on one side of the political spectrum, we tested linear and quadratic effects of self-reported political orientation on CMQ scores respectively. Specifically, we predicted conspiracy mentality from (country-centered) political orientation, squared centered political orientation, and random slopes for both. In Study 1, endorsement of the CMQ items was more pronounced on the political right than the political left, as exhibited by a positive linear effect,  $B = 0.115, SE = 0.037, p = .005, 95\% \text{ CI } [0.042; 0.187]$ . Study 2 did not replicate this linear relation,  $B = 0.068, SE = 0.072, p = .362$ . The 95% confidence interval  $[-0.073; 0.210]$  included both the zero and the estimate obtained in Study 1 (0.115). A closer look at the estimates within country suggested large heterogeneity in the linear relation (Figure 1). While there was a clear positive relation suggestive of greater conspiracy mentality at the political right in countries spanning the center-north of Europe like Austria, Belgium (particularly Flanders), France, Germany, Netherlands,

Poland and Sweden, the conspiracy mentality was more pronounced on the left in countries spanning the center-south of Europe like Hungary, Romania and Spain.

The predicted positive quadratic relation, in contrast, was significant in Study 1,  $B = 0.062$ ,  $SE = 0.017$ ,  $p = .001$ , 95% CI [0.029; 0.095], as well as Study 2,  $B = 0.220$ ,  $SE = 0.031$ ,  $p < .001$ , 95% CI [0.160; 0.281]. Unlike the linear relation, this pattern of greater conspiracy mentality at both political extremes was less heterogeneous (Figure 2). To test whether conspiracy mentality is greater at the political extremes than at the political center, we used the two-lines technique to check for a U-shaped relation<sup>68</sup>. This would be indicated by two significant interrupted regression lines and a sign change (negative slope for low values, positive slope for high values). To enhance interpretability we relied on the raw, non-centered scores of political orientation but results remain identical for within-country centered political orientation. For Study 1, our analyses suggested that there was indeed a linear decrease in conspiracy mentality among the left extreme to a value of 3.4 (the breakpoint was determined by the Robin Hood algorithm<sup>68</sup>),  $b = -0.40$ ,  $p < .001$ , 95% CI [-0.46; -0.33], and a linear increase from there to the extreme right,  $b = 0.17$ ,  $p < .001$ , 95% CI [0.10; 0.24] (Figure 3). Likewise, in Study 2 there a significant decrease from the left extreme to the breakpoint of 5,  $b = -0.28$ ,  $p < .001$ , 95% CI [-0.30; -0.26], followed by a linear increase,  $b = 0.16$ ,  $p < .001$ , 95% CI [0.13; 0.18] (Figure 4).

To explore the heterogeneity in both linear and quadratic relationships across countries, we conducted exploratory analyses to examine whether the size and direction of these meaningfully related to the current national government's position on a left-right wing scale in general, economically, and socially. Due to the small number of countries in Study 2, we restricted these analyses to the Study 1 sample and conducted three separate analyses for each potential moderator by adding two interaction terms with the linear and the quadratic effect of political

orientation and Bonferroni-adjusted the critical value to  $p = .008$  for six tests. None of these moderating analyses yielded significant interactions of either the linear or the quadratic effect (see supplement S6 for detailed analyses in Supplementary Table 8 to 10 and corresponding scatterplots in Supplementary Figures 5 to 7). This is potentially due to the lack of statistical power given the (still) small number of countries.

The control deprivation perspective allows the speculation that the relationship between political orientation and conspiracy mentality might appear because people with more extreme political views find themselves less frequently represented in the government. We thus dummy-coded whether the preferred (Study 1) or recently voted (Study 2) political party was in government at the time of data collection and included this as well as demographic variables (sex, age, education) as control variables. Conspiracy mentality was higher for supporters of parties not in power, as well as for less educated people (who did not obtain a high school degree scored higher than those with high school degree, while the latter group scored higher than people with a university degree), while sex and age showed inconsistent results (Table 1). Independent of these associations, however, the quadratic term of political orientation (and the linear one in Study 1) remained incrementally valid predictors (Table 1). Thus, aggregated across countries, we found support for greater conspiracy mentality at the political extremes, independent of control deprivation or level of education.

On an exploratory basis, we also tested the idea that the effect of political orientation might be attenuated, once the preferred party gains power. To do so, we predicted conspiracy mentality with the linear and quadratic terms of standardized political orientation, the coding of whether the preferred party was in power at time of data collection (with random slopes per country for all three variables) and their interaction. In Study 1, there was no longer a main effect

of party in power,  $B = -0.139$ ,  $SE = 0.108$ ,  $p = .208$ , 95% CI [-0.350; 0.071], but an interaction with both the linear,  $B = -0.184$ ,  $SE = 0.038$ ,  $p < .001$ , 95% CI [-0.259; -0.109], as well as the quadratic term of political orientation,  $B = -0.092$ ,  $SE = 0.026$ ,  $p < .001$ , 95% CI [-0.142; -0.042]. These interactions indicate that people at the far right are especially prone to conspiracy mentality when their party is not in power (Figure 5). Study 2 largely replicated this exploratory finding, also in its shape (Figure 6). The interaction with both the linear,  $B = -0.164$ ,  $SE = 0.029$ ,  $p < .001$ , 95% CI [-0.220; -0.107], as well as the quadratic term of political orientation,  $B = -0.138$ ,  $SE = 0.022$ ,  $p < .001$ , 95% CI [-0.180; -0.096], indicated a significant attenuation of the relation between political orientation and conspiracy mentality for supporters of parties in power. The relation to whether the voted party was in power became substantially weaker (albeit still significant),  $B = -0.497$ ,  $SE = 0.186$ ,  $p = .017$ , 95% CI [-0.861; -0.132].

### *Analyses based on voting intentions*

In order to address the limitations of self-placement on a political orientation scale, we also inquired about respondents' party preferences by asking which political party they would vote or had voted for if there were an election. We used these hypothetical voting intentions (Study 1), respectively the party participants had voted for at the last national elections (Study 2) to give participants three numerical indicators (general left-right; economic left-right; GAL-TAN) of their political orientation corresponding to the party they indicated. For each of these (standardized) indicators, we repeated the multi-level analyses to test for linear and quadratic effects of political position on the general, economic, and social left-right spectrum, while statistically controlling for sex, age, education, and whether the preferred/ voted party was in power (for detailed results see Supplementary Table 17).

For the analyses based on the respective party's stance on the general left-right dimension, both studies suggested a small quadratic relationship to conspiracy mentality as well as a descriptive but non-significant positive linear relation mirroring the results for self-reported political orientation (Table 2). Following up on the quadratic relation with a two-line technique (that ignores the nested structure of the data and does not include control variables) suggested two significant interrupted regression lines with a sign change, indicating a U-shaped relationship for both studies. Specifically, in Study 1 there was a negative linear trend on the left side of the political spectrum,  $b = -0.69$ ,  $z = -12.72$ ,  $p < .0001$ , 95% CI [-0.80; -0.59] and a positive linear trend on the right side of the political spectrum,  $b = 0.79$ ,  $z = 23.23$ ,  $p < .0001$ , 95% CI [0.66; 0.87]. Likewise, in Study 2, we observed a negative slope from extreme left to the breakpoint (0.37),  $B = -0.75$ ,  $z = -22.00$ ,  $p < .0001$ , 95% CI [-0.82; -0.69], and a positive slope from the breakpoint to the extreme right,  $B = 1.00$ ,  $z = 39.68$ ,  $p < .0001$ , 95% CI [0.93; 1.08].

When we replaced political party preference with a quantitative indicator of the party's stance on economic issues, no relationship between political orientation and conspiracy mentality was sufficiently strong to show when including statistical control. This was markedly different for the social left-right stance on democratic rights and freedom (GAL-TAN). Here, both studies exhibited clear positive linear relations with pronouncedly greater conspiracy mentality for supporters and voters of parties coded as traditional, authoritarian, and nationalistic as opposed to green, alternative, and liberal (Table 2).

Taken together, supporters of political parties that are judged as extreme on either ends of the political spectrum in general terms have increased conspiracy mentality. Focusing on the position of parties on the dimension of democratic values and freedom, the link with conspiracy mentality is linear, with higher conspiracy mentality among supporters of authoritarian right-

wing parties. Thus, supporters of (extreme) right-wing parties seem to have a consistently higher conspiracy mentality, whereas the same only counts for (extreme) left-wing parties of a more authoritarian make-up and with less focus on ecological and liberal values.

### **Discussion**

Across a large sample of respondents from 26 countries and two studies, estimating self-reported political orientation and voting intentions for political parties, we found support for consistent relations between political orientation and the propensity to believe in conspiracies. Respondents at the extreme ends of the political continuum expressed more pronounced beliefs that the world is governed by secret forces operating in the dark. We had proposed two (not necessarily mutually exclusive) explanations of this pattern: (political) control deprivation and worldview-consistency. In the former case, conspiracy mentality is a reaction to the fact that one's political ideas are not part of the political mainstream, whereas in the latter, one's general outlook on the world also determines one's political preferences. In line with the (political) control deprivation idea, supporters of parties not included in the government harbored higher levels of conspiracy mentality in both studies. Crucially, however, controlling for whether one's preferred party is in power still leaves the quadratic effect of political orientation intact in both studies, thus allowing the speculation that individual levels of conspiracy mentality are at least partly associated with one's general worldview.

Which aspects of extreme political ideologies and conspiracy mentality overlap and thus create such a U-shaped relation? One prominent candidate is their Manichaeic view of a black-and-white world<sup>48</sup>. Conspiracy allegations typically blame a few powerful evil people for prioritizing their own sinister goals over the welfare of all others<sup>69</sup>. Likewise, identifiable "evil" groups take a prominent role in the rhetoric of both extreme right-wing parties (e.g., Muslims,

foreigners), as well as of extreme left-wing parties (e.g., bank and hedge fund managers, the European Union). By dividing the social realm into clearly antagonistic forces of good and evil, complexity is reduced and taking a firm (and moral) position is comparatively easier. Although this seems to align well with the finding that the belief in simple political solutions is a common denominator of both political extremism and belief in conspiracy theories<sup>34</sup>, the robust association even after controlling for education does not strongly support this as the relevant link.

As an important caveat, however, we have not tested the worldview hypothesis directly. Rather we set up a critical test whether the observed pattern may be reducible to political control deprivation (i.e., not feeling represented by the parties in power). It has survived this potential falsification and therefore remains a plausible account to explain the residual connection between political orientation and conspiracy mentality. Other explanations are conceivable as well, however. Future research may further elucidate this connection and test the worldview hypothesis more directly.

Our findings add a further nuance to the observation of conspiracy mentality at both ends of the political spectrum. While conspiracy mentality peaks for supporters of parties that are either seen as extreme left-wing or right-wing in general, it is specifically the case for supporters of parties that are socially right-wing and do not endorse liberal values. Supporters of extreme left-wing parties do not exhibit particularly strong conspiracy mentality, to the extent that these parties take a liberal stance on social issues. This is in line with the observations of a connection between conspiracy beliefs and variables tapping into non-egalitarian attitudes like binding foundations<sup>70</sup>.

The fact that there is a strong connection between social conservatism rather than economic conservatism and conspiracy mentality also aligns well with the presumed function of conspiracy beliefs. Endorsing conspiracies results from the need to manage threat and uncertainty by creating an illusion of control<sup>52</sup> and clear answers<sup>71</sup>. Social (rather than economic) conservatism has been connected to these same needs<sup>66,72</sup>, speaking further to the intimate connection between conspiracy mentality and social (but not economic) right-wing political orientation.

Across both studies, our findings strongly corroborate the notion that ‘conspiracy theories are for losers’<sup>58</sup>. We have interpreted this through the lens of political control deprivation (higher conspiracy mentality because one lost the vote) or as a reaction to power<sup>73</sup>. We want to caution, however, against ignoring a potential reverse-causation. It is certainly feasible that the experience of losing an election increases conspiracy mentality, but as well or instead, anti-mainstream parties that a priori have very low chances of winning an election may appeal to conspiracy believers (because of their populist anti-elite rhetoric or because they can quench a need for uniqueness<sup>15</sup>). In Study 1, respondents indicated which party they intended to vote for, whereas in Study 2 they reported which party they had voted for at the most recent elections (thus constituting a more direct test). Comparing the beta weights of the two models (including equally scaled variables) suggest that the association was 52% larger in Study 2 than in Study 1 (-0.636 vs. -0.418) and confidence intervals did not overlap. Although one would expect this pattern if the experience of having lost an election does indeed have an effect above the preference for non-mainstream parties, it does not offer proof. Strong tests of the causal direction can only be conducted on longitudinal data (for such data on election fraud conspiracies see<sup>57</sup>).

In an exploratory fashion, we also examined whether diverging patterns for political orientation depended on whether one's preferred party was in power. We found remarkably strong support for this speculation showing that in fact, control deprivation was accompanied by an increase in conspiracy mentality almost exclusively for the (extreme) political right. This finding resonates with an ideological asymmetry observed in the US context, whereby conservatives' trust in the government is more contingent on whether the president shares their ideology than liberals' trust in government<sup>74</sup>. Likewise, not being in power was accompanied by strong generalized anti-establishment beliefs (i.e., conspiracy mentality) for the political right but not the left.

Although not the focus of the present research, our data also provided further support for greater conspiracy mentality among people with lower levels of education. According to previous analyses, low formal education is associated with a belief in simple solutions as well as reduced feelings of control, which again boost belief in conspiracy theories<sup>75</sup>. Political orientation, however, had a robust association with conspiracy mentality, even after controlling for education, further ruling out that their association is due to a confound with education and resulting control deprivation.

Despite these consistent findings across a large array of diverse national context, we should highlight two qualifications to our findings. First, the effect sizes are overall modest. In both studies, supporting a non-governmental party and having a low education level had substantially larger associations with conspiracy mentality than either the linear or quadratic term of political orientation. Although it was not reducible to either of the two, its contribution to the prediction of conspiracy mentality was overall modest. That said, there was a remarkable heterogeneity across national contexts. Particularly the linear relation ranged from strongly

negative (more conspiracy mentality among self-reported leftists, as in Spain) to strongly positive (more conspiracy mentality among the political right, as in France, Poland or Sweden). Future research will have to provide an even greater diversity of national samples to explore these differences in more detail. In contrast to this diversity, the positive quadratic relation (more conspiracy mentality at the extremes) was more consistent, in particular in samples similar to the population in terms of key demographics in Study 2.

As the attentive reader will notice, heterogeneity was not only present between countries, but also within countries when comparing the two studies. We can only speculate about the exact reasons for this. One obvious candidate might be different compositions of the samples or slightly different recruiting strategies (e.g., Study 2 matches demographic population parameters but focuses on self-selected participants in panels on political research, likely with an above-average interest in politics). Another, equally speculative possibility, is that these associations are more volatile than commonly assumed. Although in general, conspiracy mentality is a relatively stable disposition, political events and rhetoric of political elites might fuel the endorsement of such worldviews and affect the course/direction of conspiratorial beliefs of citizens.

We will illustrate the latter point with two examples. Let us consider the case of Romania: during the collection of data for Study 2 (February-May 2018), the governing (leftist) government party (PSD), changed criminal procedure. The alleged aim was to fight a deep state orchestrated by George Soros, while in reality arguably to save their party leader, Liviu Dragnea, from conviction due to corruption. Throughout that period, leftists in Romania endorsed conspiracy mentality to a greater degree than right-wingers. At the (later) time of Study 1 (June 2019), Dragnea had been officially convicted for over a year and the (more common) positive

linear relationship was also observed in Romania. On the other hand, such a positive linear relationship was present in the Hungarian data in Study 1 (July 2017), but it turned to a negative correlation in Study 2 (Spring 2018). This might be another indication for the role of rhetoric by the political elites. Namely, 2017 was a pre-electoral year in Hungary, and Viktor Orbán and his right-wing party intensified the attacks on the 'Soros mafia' and 'Brussels' and gained more and more control over the Hungarian media<sup>76</sup>. At the same time, in the run-up to the elections in April 2018, conspiracy narratives have become abundant on the left, with narratives such as the Hungarian Prime Minister is the agent of Vladimir Putin, and leading Fidesz politicians are secretly taking psychiatric care in Austria. In line with study 2, another public opinion poll from after the elections - autumn 2018 - found strong conspiracy narratives on the left, and also, higher conspiracy mentality among left-wing opposition than among governmental voters<sup>77</sup>. Such post-hoc explanations of unexpected differences (albeit indicative) remain to be speculative, but they might serve as a welcome inspiration for further explorations on the role of sample characteristics and political elite rhetoric in future studies. All in all, our study provides the largest investigation to date of conspiracy mentality in terms of both number of participants and included countries, showing consistent support for stronger conspiracy mentality at both ends of the political spectrum with two different methodological approaches. Moreover, our study adds further nuance to this U-shaped function, showing that this is not symmetric, but that conspiracy mentality is particularly pronounced on the political right, particularly among voters of traditional, nationalistic and authoritarian parties. The fact that this pattern remained intact even after controlling for being in power or not also resonates with the observation that some winning parties and candidates do not just abandon their conspiracy rhetoric once they are in office (although being in power significantly curbed the asymmetrically greater conspiracy

mentality on the political right-wing). Instead, their anti-elite rhetoric remains intact even when they constitute a personification of exactly this elite and, so our data might add, so does the anti-elite conspiracy mentality of their electorate.

## Methods

To test the link between conspiracy mentality and political orientation, we aimed at collecting data from a diverse set of (predominantly European) countries. To this end, we (first and last authors) issued an open call for participation via the EU COST Action network “Comparative Analysis of Conspiracy Theories (COMPACT)”. Specifically, we invited collaborators to contribute datasets that included all required variables from at least 300 respondents. The study was conducted in accordance with the 2016 American Psychological Association Ethical Principles of Psychologists and Code of Conduct<sup>78</sup>. As the project did not involve deception, vulnerable populations, identifiable data, intensive data, or interventions it was exempt from ethical approval at most participating institutions. Specifically, it was deemed to be exempt from ethics approval at Johannes Gutenberg University (Germany), Université Libre de Bruxelles (Belgium), University of Banja Luka (Bosnia and Herzegovina), University of Brasília (Brazil), University of Zagreb (Croatia), the Czech Academy of Sciences, Brno (Czech Republic), University of Rennes (France), University of Oxford (data collection in Greece), University of Iceland (Iceland), Interdisciplinary Center Herzliya (Israel), Sapienza University of Rome (Italy), the Macedonian Academy of Sciences and Arts (North Macedonia), University of Warsaw (Poland), Universidade Católica Portuguesa (Portugal), University of Bucharest (Romania), University of Neuchâtel (Switzerland). The project received ethics approval by Eötvös Loránd University, Budapest (approval number: 188/2017; Hungary), the School Research Ethics Panel at Anglia Ruskin University and University of Kent Psychology Ethics (No. 201714894944604000; UK), the Ethical Board of the Institute for Political Studies, Belgrade (Serbia), the University of Bern (#2016-02-00005; Switzerland), and the Norwegian Data Protection Authority (Norway). Spanish data came from the IESA-CSIC PACIS Panel,

which has an internal review of compliance with European and Spanish ethical and data protection regulations. Data collected by Kieskompas (Netherlands and Turkey) received ethical approval under a cluster approval to the last author by the Vrije Universiteit Amsterdam (VCWE-2015-138R1; approved in October 2015 for 5 years). All participants in all countries provided their explicit consent to participate before data collection and had the right to terminate participation at any time. Participants received no compensation with the exception of the UK and potentially the samples recruited via a panel company where this information is not publicly shared (Belgium, Germany, Israel, Norway, Spain, Switzerland).

This was complemented with a second study based on a large-scale two-wave online panel study conducted in 13 EU countries (we coded Belgium-Flanders and Belgium-French Speaking separately in the data, yielding 14 national categories). Data collection for Study 2 was conducted by Kieskompas (“Election compass”) in accordance with the Dutch Authority for the protection of personal information (“Autoriteit Persoonsgegevens”) and within the ethical norms of the VU University Amsterdam (approved under the same cluster approval as for Study 1). Panels were acquired through online Voting Advice Applications (VAAs) prior to elections. VAA users voluntarily agreed to join the panel and be contacted with research surveys. The potential respondents received an email invitation with an online link to participate. In countries where panel responses were insufficient (Austria, Belgium, Denmark, Germany, Hungary, Italy, Poland, Portugal, Romania and Sweden), respondents were also recruited via social media, where they were invited to take the same survey as the panel respondents. The study was conducted in each participating country’s native language. For the current analyses, we relied on data from Wave 1, for which data collection took place from February to May 2018.

### *Individual-level Variables*

Although individual collaborators in Study 1 were free to assess additional variables or to include the questions of this study in larger surveys (to facilitate the inclusion in ongoing large-scale national surveys), each contribution included the following variables (forward-translated to the local language by the respective local team; see OSF for all language versions): (a) the 5-item Conspiracy Mentality Questionnaire<sup>9</sup> (CMQ; e.g., “I think that government agencies closely monitor all citizens”, “I think that events which superficially seem to lack a connection are often the result of secret activities”, “I think that there are secret organizations that greatly influence political decisions”) on an 11-point scale ranging from certainly not (0%) to certain (100%); (b) a measure of political orientation (“Please indicate your political orientation on a scale from left to right”) with very left-wing coded as (1) to very right-wing (9); (c) a question tapping into voting intentions for political parties (“Who would you vote for at the next national elections?”); and (d) endorsement of at least three country-specific conspiracy theories (chosen to reflect a local left-wing, a local right-wing and a local conspiracy theory without clear political partisanship; complete list on OSF) on a scale from strongly disagree (1) to strongly agree (7). The latter were included to serve as validation of the CMQ. Finally, all surveys included demographic information on gender, age, and education. As educational systems differ drastically between all involved countries, we recoded education in a simplified manner as low (no high school diploma), medium (high school diploma), and high (university degree) by means of two dummy-coded variables with high school diploma serving as the reference category.

For Study 2, as part of a larger survey participants completed the 5-item Conspiracy Mentality scale<sup>9</sup>, as well as their self-reported political orientation on a 11-point left-right scale ranging from 0 to 10 (“In politics, people talk of 'the left' and the 'the right'. How would you

place your own views on a scale from 0 to 10, where 0 is 'left' and 10 is 'right'?). In addition, they indicated which party they voted for in the last parliamentary election, level of education, sex and age.

### ***Samples for analysis***

Each collaborator in Study 1 was encouraged to contribute as large a sample as possible, preferably matching population in terms of age and gender distribution, and excluding solely student samples. No statistical methods were used to pre-determine sample sizes, but we encouraged to collected samples as large as feasible. Supplement S1 lists all included samples with demographic information, descriptive statistics for the central variables, and details on data collection.

The total sample contained a total of  $N = 37,692$  participants (15,073 men, 22,469 women; 87 other;  $M_{age} = 43.32$  years,  $SD = 16.53$ ) from 23 countries (Table S1). Due to its large size and potential undue influence we also conducted control analyses without the sample from the Netherlands. All relevant results remain unaltered and these analyses can also be obtained online.

For Study 2, we relied on data from the European Voter Election Studies<sup>79</sup> (EVES). For 13 European countries (two separate samples for the Belgian regions), we had sufficiently large samples to allow weighing by age, gender, education, region and vote in the last election to match population distribution on these variables. The data is weighted by post-stratification and Iterative Proportional Fitting<sup>80,81</sup>, accounting for respondents' age, education and gender. To determine the extent of sample imbalance, we compared our observed geographic and demographic characteristics with that of the likely voter population as of 2011 - the Eurostat Census – to our knowledge, the best publicly available EU-wide data source. Moreover, we

calculated additional weights for vote recall in the last parliamentary election in each country, in order to adjust for partisan bias.

The raw sample contains a total of 70,882 participants (45,957 men, 24,925 women;  $M_{age} = 48.51$  years,  $SD = 16.75$ ) from 13 countries (Table S2), while the weighted sample had 47,801 participants from 13 countries (the raw number of UK respondents was too low for meaningful weighing). All analyses here are reported for the full sample. Results for the weighed sample were virtually identical and can be found in the supplement S9 (Supplementary Tables 17 to 21).

### ***Data Preparation***

All scale values were rescaled to bring them into a common metric (e.g., transforming scales from 0 to 10 into ones from 1 to 11). To translate the voting intentions for certain political parties into a meaningful metric, we re-coded these into numerical values taken from the 2014 Chapel Hill Expert Survey database<sup>67</sup> (CHES). The CHES includes coding of a large number of European political parties, and aggregates scores obtained by surveying multiple experts per country (specializing predominantly in areas of political science). Most relevant for our current purposes were the coding for each party's position on a left right continuum in terms of its broad ideological stance (LRGEN), its stance on economic issues (LRECON), and its stance on democratic freedoms and rights (GAL-TAN – an acronym for Green Alternative Libertarian vs. Traditional Authoritarian Nationalistic). Thus, for each participant, we replaced the categorical variable on which they indicated the party they would vote with three numerical variables of the respective party's stance on the left-right continuum. For parties or countries that were not included in the CHES ratings, these analyses could not be conducted and the corresponding analyses are thus based on an overall smaller sample (Study 1:  $N = 24,324$ ; Study 2:  $N = 38,702$ ).

Given the sample sizes, data distribution was assumed to be normal for all variable, but this was not formally tested. All tests are reported with two-tailed p-values.

### *Analytical Strategy*

As a first step, we aimed at establishing the measurement invariance and construct validity of the CMQ. Establishment of measurement invariance is a desirable procedure for cross-cultural analyses, as it ensures that there are no construct biases in the different versions of the scale. In light of the very large sample, we adopted liberal criteria recommended for such large samples<sup>82</sup>. For construct validity, we aimed to establish the validity of the CMQ by showing that it does meaningfully relate to the endorsement of country-specific conspiracy theories (that have a left-wing, right-wing, or no political connotation). This was done to provide support for the notion that the CMQ is a valid indicator of a general propensity to endorse specific conspiracy beliefs.

As a second step, to estimate the (linear or curvilinear) relation between political orientation and the CMQ, we pursued a twofold strategy. One was based on respondents' self-positioning on the political orientation scale ranging from left to right, and the other one based on which party respondents intended to vote for (Study 1) or voted for in the last election (Study 2). We combined this information with reliable expert ratings of a party on the left-right continuum, as well as separate ratings for economic and social issues. Whenever we found support for a curvilinear relation, we followed up with the two-line technique to establish support for an actual U-shape<sup>68</sup>.

Below, we report the unstandardized coefficient for the (within-country) z-standardized predictors. These weights can thus be easily interpreted as the increase or decrease on the conspiracy mentality scale corresponding to an increase of one standard deviation on the political

orientation scale (e.g.,  $B = -0.50$  suggests that an increase of one standard deviation on the political orientation scale corresponds to a decrease of half a scale point on the conspiracy mentality scale).

In both approaches, we controlled for demographics (sex, age, education) and whether the political party the respondent intended to vote for was in power at the time of data collection (a proxy for political control deprivation). We then tested whether controlling for this proxy would attenuate or eliminate potential quadratic effects of political orientation (speaking strongly to the notion that the curvilinear relation is due to political control deprivation) or not (suggesting residual variance compatible with the notion of worldview compatibility). Explanatorily, we also tested whether the effect of political orientation was moderated by political control deprivation (i.e., whether one's party was in power at time of data collection).

### **Data Availability**

All data for Study 1 and 2 are available at <https://osf.io/jqnd6/>.

### **Code Availability**

Custom code that supports the findings of this study is available as R Markdown at <https://osf.io/jqnd6/>.

### **Acknowledgments**

This work has been coordinated, presented and discussed within the framework of EU COST Action CA15101 “Comparative Analysis of Conspiracy Theories (COMPACT)”. German data stems from the 2014 Innovation Sample of the Socio-Economic Panel<sup>83</sup> (SOEP). Data from the Andalusian survey conducted in Spain come from the research project "Conspiracy Theories and Disinformation" directed by Estrella Gualda (University of Huelva, Spain), whose fieldwork was supported and executed by the Institute of Advanced Social Studies (IESA-CSIC) in the context of a grant received for executing the 5th Wave of the Citizen’s Panel Survey for Social Research in Andalusia (Ref: EP-1707, PIE 201710E018, IESA / CSIC, <https://panelpaxis.net/>; EG). The Czech part of the study was supported by grant 20-01214S (SG) from the Czech Science Foundation and by RVO: 68081740 (SG) of the Institute of Psychology, Czech Academy of Sciences. The funders had no role in study design, data collection and analysis, decision to publish or preparation of the manuscript.

### **Author contributions**

R.I. and J.v.P. initiated the project with an open call. R.I., O.K., J.H.C.A., M.B., A.B., M.B., N.B., K.B., R.B., A.C., S.D., K.M.D., A.D., B.G., S.G., G.H., A.K., P.K., A.K., S.M., J.M.D., M.S.P., M.P., L.P., G.P., A.R., R.R., F.A.S., M.S., R.M.S., V.S., H.T., V.T., P.W.-E., I.Z., and J.v.P. contributed to the conception of Study 1 and collected data in their respective country. A.K., Y.K., and T.E. provided the data for Study 2. R.I. and F.Z. analyzed and interpreted the data with helpful input from O.K.. R.I. drafted the article. All authors provided critical revision and approved the final version of the article.

### **Competing interests**

The authors declare no competing interests.

**Tables**

Table 1.

Fixed effects predicting conspiracy mentality from linear and quadratic term of political orientation, whether preferred party was in power at time of data collection, and demographic data in both studies.

Predictors	Study 1				Study 2			
	<i>B</i>	<i>SE</i>	<i>p</i>	95% CI	<i>B</i>	<i>SE</i>	<i>p</i>	95% CI
(Intercept)	7.196	0.151	< .0001	6.900; 7.492	6.341	0.188	< .0001	5.973; 6.709
Linear Effect	0.139	0.041	.0029	0.059; 0.219	0.124	0.075	.1180	-0.023; 0.271
Quadratic Effect	0.096	0.021	.0003	0.055; 0.137	0.188	0.025	< .0001	0.139; 0.237
Preferred Party currently in Government (1=yes)	-0.587	0.032	< .0001	-0.650; -0.524	-0.756	0.024	< .0001	-0.803; -0.709
Sex (Study 1: 1 = male; Study 2: 1 = female)	0.049	0.028	.0888	-0.006; 0.104	0.339	0.020	< .0001	0.300; 0.378
Sex (Study 1: 1 = other)	-0.451	0.259	.0816	-0.959; 0.057	-	-	-	-
Age	0.001	0.001	.1236	-0.001; 0.003	0.013	0.001	< .0001	0.011; 0.015
Low Education (1 = less than high school)	0.184	0.057	.0013	0.072; 0.296	0.383	0.037	< .0001	0.310; 0.456
High education (1 = university degree)	-0.694	0.032	< .0001	-0.757; -0.631	-0.692	0.024	< .0001	-0.739; -0.645

Table 2.

Fixed effects predicting conspiracy mentality from linear and quadratic term of three left-right codings (general, economic, social) of political party participants intended to vote for (Study 1) or voted for a last national elections (Study 2), while controlling for whether preferred party was in power at time of data collection, and demographic data.

Predictors	Study 1				Study 2			
	<i>B</i>	<i>SE</i>	<i>p</i>	95% CI	<i>B</i>	<i>SE</i>	<i>p</i>	95% CI
<i>General Left-Right Coding</i>								
(Intercept)	6.963	.198	< .001	6.575; 7.351	6.146	0.284	< .001	5.589; 6.703
Linear Effect	0.113	.052	.054	0.011; 0.215	0.135	0.161	.415	-0.181; 0.451
Quadratic Effect	0.155	.068	.040	0.022; 0.288	0.301	0.125	.032	0.056; 0.546
<i>Economic Left-Right Coding</i>								
(Intercept)	7.164	0.186	< .001	6.799; 7.529	6.560	0.225	< .001	6.119; 7.001
Linear Effect	0.050	0.045	.287	-0.038; 0.138	0.010	0.184	.958	-0.351; 0.371
Quadratic Effect	0.114	0.079	.169	-0.041; 0.269	0.053	0.214	.809	-0.366; 0.472
<i>Social Left-Right Coding (GAL-TAN)</i>								
(Intercept)	7.298	0.185	< .001	6.935; 7.661	6.531	0.216	< .001	6.108; 6.954
Linear Effect	0.290	0.072	.001	0.149; 0.431	0.334	0.086	.005	0.165; 0.503
Quadratic Effect	-0.007	0.062	.913	-0.129; 0.115	0.140	0.131	.325	-0.117; 0.397

Note. All estimates for model including dummy-coded variable whether party was in government, sex, age, and education.

**Figure legends**

Figure 1.

Linear relation of political orientation and conspiracy mentality (with 95% CI) in all samples separately and overall in multi-level models for both studies (controlling for quadratic relation). Data from Study 1 in orange triangles, data from Study 2 in blue circles. Numbers denote change in scale point on conspiracy mentality per change in political orientation in unit of standard deviation ( $N=104,253$ ).

Figure 2.

Quadratic relation of political orientation and conspiracy mentality (with 95% CI) in all samples separately and overall in multi-level models for both studies (controlling for linear relation). Data from Study 1 in orange triangles, data from Study 2 in blue circles ( $N=104,253$ ).

Figure 3.

U-shaped relationship (tested with two-line technique) of self-reported political orientation (raw) and conspiracy mentality in Study 1 ( $N = 37,692$ ). Higher density of data points is indicated by warmer colors (blue = no data points; red = a lot of data points). The dashed line represents an unbiased but smoothed estimation of the mean at each position of the x-axis. The dashed vertical line represents the break point from negative to positive slopes as estimated by the Robin-Hood-algorithm.

Figure 4.

U-shaped relationship (tested with two-line technique) of self-reported political orientation (raw) and conspiracy mentality in Study 2 ( $N = 70,882$ ). Higher density of data points is indicated by warmer colors (blue = no data points; red = a lot of data points). The dashed line represents an unbiased but smoothed estimation of the mean at each position of the x-axis. The dashed vertical line represents the break point from negative to positive slopes as estimated by the Robin-Hood-algorithm.

Figure 5.

Conspiracy Mentality as a function of linear and quadratic political orientation, inclusion of party intending to vote for in government (0 = no, 1 = yes) and their interaction in Study 1 ( $N = 25,910$ ) with predicted 95% confidence interval. Detailed results of model in Supplement 12 (Table S25).

Figure 6.

Conspiracy Mentality as a function of linear and quadratic political orientation, inclusion of party voted for in government (0 = no, 1 = yes) and their interaction in Study 2 ( $N = 45,260$ ) with predicted 95% confidence interval. Detailed results of model in Supplement 12 (Table S25).

### References

- [1] Swami, V. et al. Conspiracist ideation in Britain and Austria: Evidence of a monological belief system and associations between individual psychological differences and real-world and fictitious conspiracy theories. *British Journal of Psychology* **102(3)**, 443-463 (2011). <https://doi.org/10.1111/j.2044-8295.2010.02004.x>
- [2] Douglas, K. M. COVID-19 conspiracy theories. *Group Processes & Intergroup Relations* **24(2)**, 270-275 (2021). <https://doi.org/10.1177/1368430220982068>
- [3] Imhoff, R., & Lamberty, P. A bioweapon or a hoax? The link between distinct conspiracy beliefs about the Coronavirus disease (COVID-19) outbreak and pandemic behavior. *Social Psychological and Personality Science* **11**, 1110-1118 (2020). <https://doi.org/10.1177/1948550620934692>
- [4] Golec de Zavala, A. & Federico, C. M. Collective narcissism and the growth of conspiracy thinking over the course of the 2016 United States presidential election: A longitudinal analysis. *European Journal of Social Psychology* **48(7)**, 1011-1018 (2018). <https://doi.org/10.1002/ejsp.2496>
- [5] Douglas, K.M. et al. Understanding conspiracy theories. *Advances in Political Psychology* **40(S1)**, 3-35 (2019). <https://doi.org/10.1111/pops.12568>
- [6] van Prooijen, J. W. *The psychology of conspiracy theories* (Routledge, 2018). <https://doi.org/10.4324/9781315525419>
- [7] Butter, M. & Knight, P. (Eds.). *Routledge handbook of conspiracy theories* (Routledge, 2020). <https://doi.org/10.4324/9780429452734>
- [8] Sunstein, C. R. & Vermeule, A. Conspiracy theories: Causes and cures. *Journal of Political Philosophy* **17(2)**, 202-227 (2009). <https://doi.org/10.1111/j.1467-9760.2008.00325.x>

- [9] Bruder, M., Haffke, P., Neave, N., Nouripanah, N. & Imhoff, R. Measuring individual differences in generic beliefs in conspiracy theories across cultures: Conspiracy mentality questionnaire. *Frontiers in Psychology* **4:225** (2013).  
<https://doi.org/10.3389/fpsyg.2013.00225>
- [10] Goertzel, T. Belief in conspiracy theories. *Political Psychology* **15(4)**, 731-742 (1994).  
<https://doi.org/10.2307/3791630>
- [11] Wood, M. J., Douglas, K. M. & Sutton, R. M. Dead and alive: Beliefs in contradictory conspiracy theories. *Social Psychological and Personality Science* **3(6)**, 767-773 (2012).  
<https://doi.org/10.1177/1948550611434786>
- [12] Imhoff, R. & Bruder, M. Speaking (un-)truth to power: Conspiracy mentality as a generalized political attitude. *European Journal of Personality* **28**, 25-43 (2014).  
<https://doi.org/10.1002/per.1930>
- [13] Moscovici, S. (1987). The conspiracy mentality. In C. F. Graumann and S. Moscovici (Eds.) *Changing conceptions of conspiracy* (pp. 151-169). (Springer, 1987).  
[https://doi.org/10.1007/978-1-4612-4618-3\\_9](https://doi.org/10.1007/978-1-4612-4618-3_9)
- [14] Moscovici, S. Reflections on the popularity of ‘Conspiracy Mentalities’. *International Review of Social Psychology* **33(1)**, 1–12 (2020). <https://doi.org/10.5334/irsp.432>
- [15] Imhoff, R. & Lamberty, P. Too special to be duped: Need for uniqueness motivates conspiracy beliefs. *European Journal of Social Psychology* **47**, 724-734 (2017).  
<https://doi.org/10.1002/ejsp.2265>
- [16] Imhoff, R. & Lamberty, P. How paranoid are conspiracy believers? Towards a more fine-grained understanding of the connect and disconnect between paranoia and belief in

- conspiracy theories. *European Journal of Social Psychology* **48**, 909-926 (2018).  
<https://doi.org/10.1002/ejsp.2494>
- [17] Bergmann, E. *Conspiracy and populism*. (Palgrave Macmillan, 2018).  
<https://doi.org/10.1007/978-3-319-90359-0>
- [18] Müller, J. W. *Was ist Populismus? Ein Essay*. (Suhrkamp Verlag, 2016).
- [19] Jolley, D. & Douglas, K. M. The social consequences of conspiracism: Exposure to conspiracy theories decreases intentions to engage in politics and to reduce one's carbon footprint. *British Journal of Psychology* **105(1)**, 35-56 (2014).  
<https://doi.org/10.1111/bjop.12018>
- [20] Swami, V., Barron, D., Weis, L. & Furnham, A. To Brexit or not to Brexit: The roles of Islamophobia, conspiracist beliefs, and integrated threat in voting intentions for the United Kingdom European Union membership referendum. *British Journal of Psychology* **109(1)**, 156-179 (2018). <https://doi.org/10.1111/bjop.12252>
- [21] Imhoff, R., Dieterle, L. & Lamberty, P. Resolving the puzzle of conspiracy worldview and political activism: Belief in secret plots decreases normative but increases non-normative political engagement. *Social Psychological and Personality Science* **12(1)**, 71-79 (2021).  
<https://doi.org/10.1177/1948550619896491>
- [22] Jolley, D. & Paterson, J. L. Pylons ablaze : Examining the role of 5G COVID-19 conspiracy beliefs and support for violence. *British Journal of Social Psychology* **59(3)**, 628-640 (2020). <https://doi.org/10.1111/bjso.12394>
- [23] Adorno, T. W., Frenkel-Brunswik, E., Levinson, D. J. & Sanford, R. N. *The authoritarian personality* (Harper & Brothers, 1950).

- [24] Imhoff, R. Beyond (right-wing) authoritarianism: Conspiracy mentality as an incremental predictor of prejudice. In. M. Bilewicz, A. Cichocka, & W. Soral (Eds.) *The psychology of conspiracy* (pp. 122-141) (Routledge, 2015).
- [25] Abalakina-Paap, M., Stephan, W. G., Craig, T. & Gregory, W. L. Beliefs in conspiracies. *Political Psychology* **20(3)**, 637-647 (1999). <https://doi.org/10.1111/0162-895X.00160>
- [26] Đorđević, J. M., Žeželj, I. & Đurić, Ž. Beyond General Political Attitudes: Conspiracy Mentality as a Global Belief System Predicts Endorsement of International and Local Conspiracy Theories. *Journal of Social and Political Psychology* **9(1)**, 144-158 (2021). <https://doi.org/10.5964/jspp.5609>
- [27] Grzesiak-Feldman, M. & Irzycka, M. Right-wing authoritarianism and conspiracy thinking in a Polish sample. *Psychological Reports* **105(2)**, 389-393 (2009). <https://doi.org/10.2466/PR.105.2.389-393>
- [28] Dieguez, S., Wagner-Egger, P. & Gauvrit, N. Nothing happens by accident, or does it? A low prior for randomness does not explain belief in conspiracy theories. *Psychological Science* **26(11)**, 1762-1770 (2015). <https://doi.org/10.1177/0956797615598740>
- [29] Douglas, K. M., Sutton, R. M., Callan, M. J., Dawtry, R. J. & Harvey, A. J. Someone is pulling the strings: Hypersensitive agency detection and belief in conspiracy theories. *Thinking and Reasoning* **22(1)**, 57-77 (2016). <https://doi.org/10.1080/13546783.2015.1051586>
- [30] Gauchat, G. Politicization of science in the public sphere: A study of public trust in the United States, 1974 to 2010. *American Sociological Review* **77(2)**, 167-187 (2012). <https://doi.org/10.1177/0003122412438225>

- [31] Jost, J.T., van der Linden, S., Panagopoulos, C. & Hardin, C. Ideological asymmetries in conformity, desire for shared reality, and the spread of misinformation. *Current Opinion in Psychology* **23**, 77-83 (2018). <https://doi.org/10.1016/j.copsyc.2018.01.003>
- [32] Miller, J.M., Saunders, K.L. & Farhart, C.E. Conspiracy endorsement as motivated reasoning: The moderating roles of political knowledge and trust. *American Journal of Political Science* **60(4)**, 824-844 (2015). <https://doi.org/10.1111/ajps.12234>
- [33] van der Linden, S., Panagopoulos, C., Azevedo, F. & Jost, J. T. The paranoid style in American politics revisited: An ideological asymmetry in conspiratorial thinking. *Political Psychology*. <https://doi.org/10.1111/pops.12681> (2020).
- [34] van Prooijen, J. W., Krouwel, A. P. & Pollet, T. V. Political extremism predicts belief in conspiracy theories. *Social Psychological and Personality Science* **6(5)**, 570-578 (2015). <https://doi.org/10.1177/1948550614567356>
- [35] Nera, K., Wagner-Egger, P., Bertin, P., Douglas, K. & Klein, O. A Power-Challenging Theory of Society, or a Conservative Mindset? Upward and Downward Conspiracy Theories as Ideologically Distinct Beliefs. *European Journal of Social Psychology*. <https://doi.org/10.1002/ejsp.2769> (2021).
- [36] Krouwel, A., Kutiyiski, Y., Van Prooijen, J. W., Martinsson, J. & Markstedt, E. Does extreme political ideology predict conspiracy beliefs, economic evaluations and political trust? Evidence from Sweden. *Journal of Social and Political Psychology* **5(2)**, 435–462 (2017). <https://doi.org/10.5964/jspp.v5i2.745>
- [37] Babińska, M. & Bilewicz, M. (2019). Teorie spiskowe a polityka [Conspiracy theories and politics]. In: A. Stefaniak & M. Winiewski (eds.) Uprzedzenia w Polsce 2017 [Prejudice in Poland 2017]. (pp. 307-327) (Liberi Libri, 2019).

- [38] Imhoff, R. & Decker, O. Verschwörungsmentalität als Weltbild. In: O. Decker, J. Kiess & E. Brähler (Eds.), *Rechtsextremismus der Mitte* (pp. 130-145). (Psychosozial Verlag, 2013). <https://doi.org/10.30820/9783837966367>
- [39] Arendt, H. *The origins of totalitarianism Part 1: Antisemitism* (Harcourt, Brace and World, 1951).
- [40] Brandt, M. J., Reyna, C., Chambers, J. R., Crawford, J. T. & Wetherell, G. The ideological-conflict hypothesis: Intolerance among both liberals and conservatives. *Current Directions in Psychological Science* **23**(1), 27-34 (2014). <https://doi.org/10.1177/0963721413510932>
- [41] Cichocka, A., Bilewicz, M., Jost, J.T., Marrouch, N. & Witkowska, M. On the grammar of politics—or why conservatives prefer nouns. *Political Psychology* **37**, 799-815 (2016). <https://doi.org/10.1111/pops.12327>
- [42] Koch, A., Dorrough, A., Glöckner, A. & Imhoff, R. The ABC of society: Perceived similarity in agency/socioeconomic success and conservative-progressive beliefs increases intergroup cooperation. *Journal of Experimental Social Psychology* **90**, 103996. <https://doi.org/10.1016/j.jesp.2020.103996> (2020).
- [43] Koch, A. et al. Groups' warmth is a personal matter: Understanding consensus on stereotype dimensions reconciles adversarial models of social evaluation. *Journal of Experimental Social Psychology* **89**, 103995. <https://doi.org/10.1016/j.jesp.2020.103995> (2020).
- [44] Sternisko, A., Cichocka, A. & van Bavel, J. The dark side of social movements: Social identity, non-conformity, and the lure of conspiracy theories. *Current Opinion in Psychology* **35**, 1-6 (2020). <https://doi.org/10.1016/j.copsyc.2020.02.007>

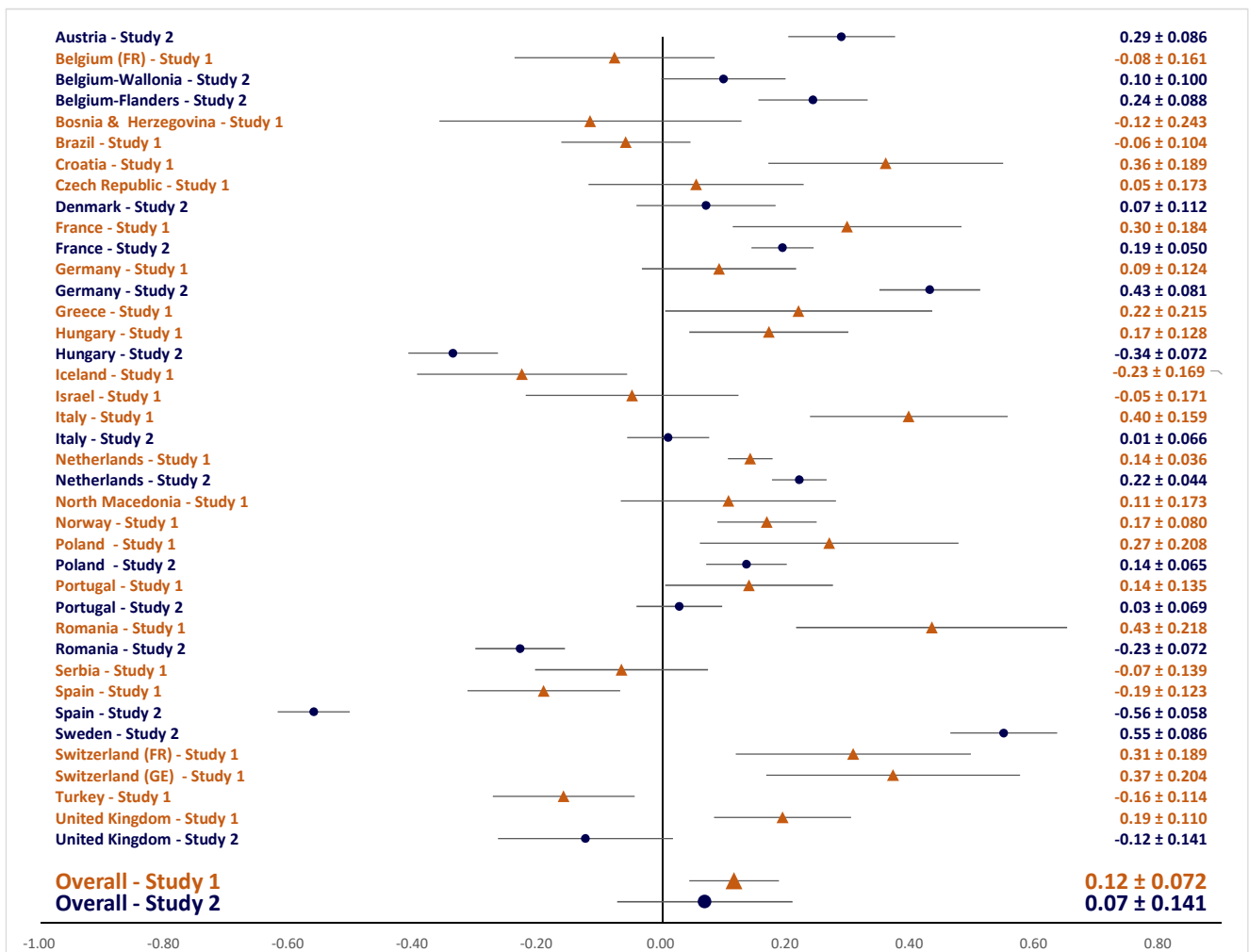
- [45] van Prooijen, J. W. & Krouwel, A. P. Extreme political beliefs predict dogmatic intolerance. *Social Psychological and Personality Science* **8(3)**, 292-300 (2017).  
<https://doi.org/10.1177/1948550616671403>
- [46] van Prooijen, J. W. & Krouwel, A. P. Psychological features of extreme political ideologies. *Current Directions in Psychological Science* **28(2)**, 159-163 (2019).  
<https://doi.org/10.1177/0963721418817755>
- [47] Rooduijn, M. & Akkerman, T. Flank attacks: Populism and left-right radicalism in Western Europe. *Party Politics* **23(3)**, 193-204 (2017). <https://doi.org/10.1177/1354068815596514>
- [48] Oliver, J. E. & Wood, T. J. Conspiracy theories and the paranoid style(s) of mass opinion. *American Journal of Political Science* **58(4)**, 952-966 (2014).  
<https://doi.org/10.1111/ajps.12084>
- [49] Conway III, L. G., Houck, S. C., Gornick, L. J. & Repke, M. A. Finding the Loch Ness monster: Left-wing authoritarianism in the United States. *Political Psychology* **39(5)**, 1049-1067 (2018). <https://doi.org/10.1111/pops.12470>
- [50] Van Hiel, A., Duriez, B. & Kossowska, M. The presence of left-wing authoritarianism in Western Europe and its relationship with conservative ideology. *Political Psychology* **27**, 769–793 (2006). <https://doi.org/10.1111/j.1467-9221.2006.00532.x>
- [51] Bartlett, J. & Miller, C. *The power of unreason: Conspiracy theories, extremism and counter-terrorism* (Demos, 2010).
- [52] Douglas, K. M., Sutton, R. M. & Cichocka, A. The psychology of conspiracy theories. *Current Directions in Psychological Science* **26(6)**, 538-542 (2017).  
<https://doi.org/10.1177/0963721417718261>

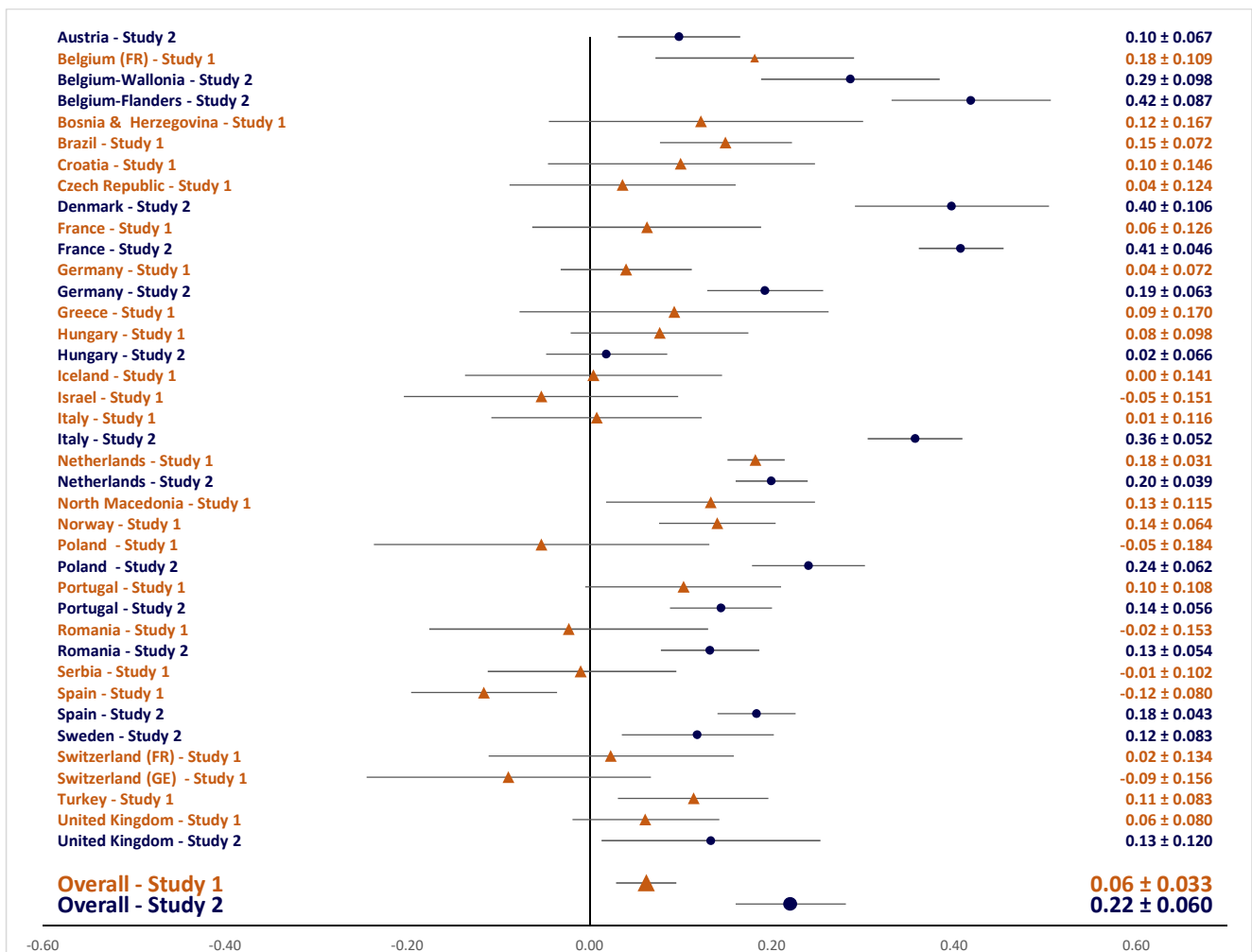
- [53] Sullivan, D., Landau, M. J. & Rothschild, Z. K. An existential function of enemyship: Evidence that people attribute influence to personal and political enemies to compensate for threats to control. *Journal of Personality and Social Psychology* **98(3)**, 434-449 (2010). <https://doi.org/10.1037/a0017457>
- [54] van Prooijen, J. W. & Acker, M. The influence of control on belief in conspiracy theories: Conceptual and applied extensions. *Applied Cognitive Psychology* **29(5)**, 753-761 (2015). <https://doi.org/10.1002/acp.3161>
- [55] Stojanov, A. & Halberstadt, J. Does lack of control lead to conspiracy beliefs? A meta-analysis. *European Journal of Social Psychology* **50(5)**, 955-968 (2020). <https://doi.org/10.1002/ejsp.2690>
- [56] Kofta, M., Soral, W. & Bilewicz, M. What breeds conspiracy antisemitism? The role of political uncontrollability and uncertainty in the belief in Jewish conspiracy. *Journal of Personality and Social Psychology* **118**, 900–918 (2020). <https://doi.org/10.1037/pspa0000183>
- [57] Edelson, J., Alduncin, A., Krewson, C., Sieja, J. A. & Uscinski, J. E. The effect of conspiratorial thinking and motivated reasoning on belief in election fraud. *Political Research Quarterly* **70(4)**, 933-946 (2017). <https://doi.org/10.1177/1065912917721061>
- [58] Uscinski, J. E. & Parent, J. M. *American conspiracy theories* (Oxford University Press, 2014). <https://doi.org/10.1093/acprof:oso/9780199351800.001.0001>
- [59] Nyhan, B. Media scandals are political events: How contextual factors affect public controversies over alleged misconduct by US governors. *Political Research Quarterly* **70(1)**, 223-236 (2017). <https://doi.org/10.1177/1065912916684034>

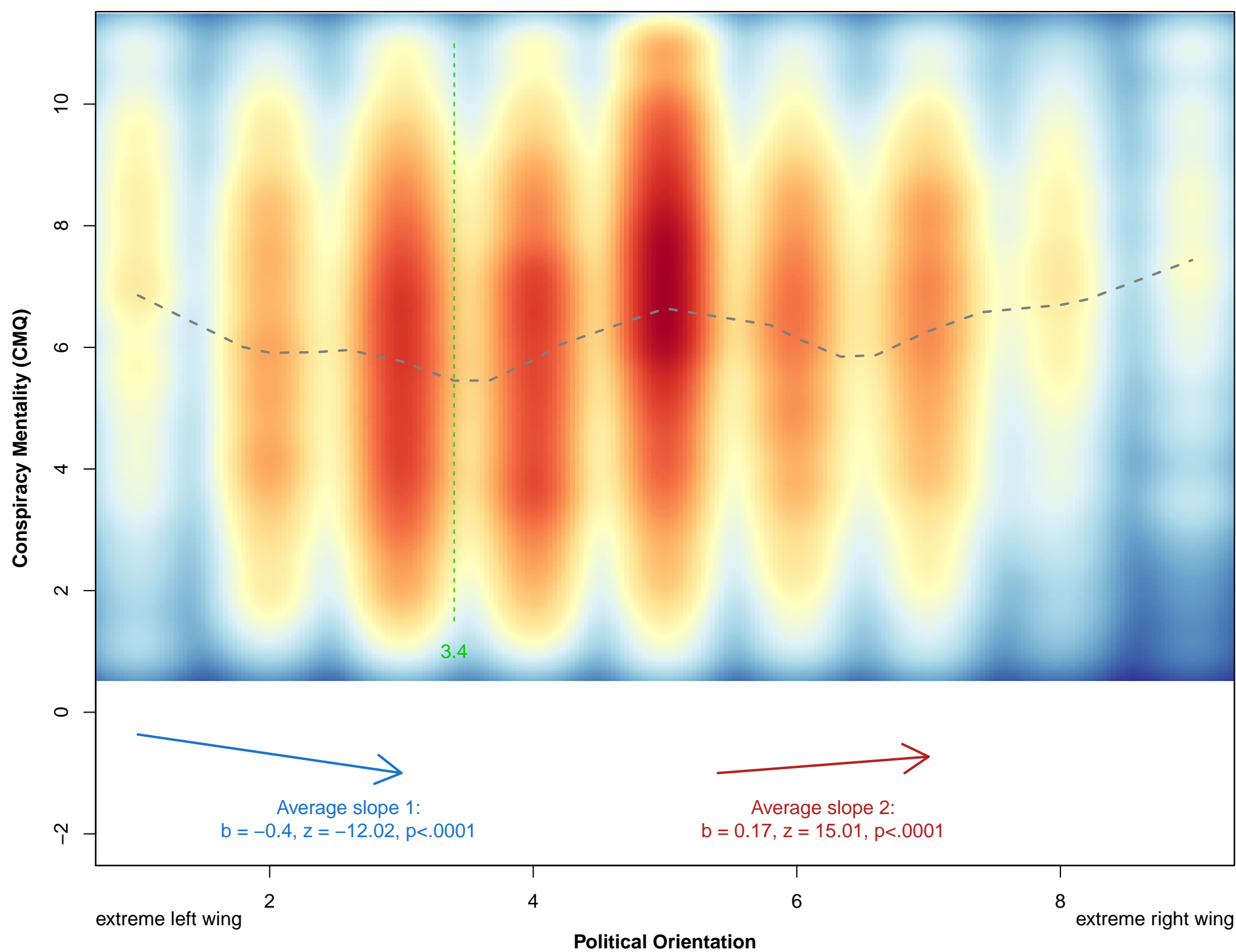
- [60] Jost, J. T., Nosek, B. A. & Gosling, S. D. Ideology: Its resurgence in social, personality, and political psychology. *Perspectives on Psychological Science* **3(2)**, 126-136 (2008).  
<https://doi.org/10.1111/j.1745-6916.2008.00070.x>
- [61] Furnham, A. & Fenton-O'Creevy, M. Personality and political orientation. *Personality and Individual Differences* **129**, 88-91 (2018). <https://doi.org/10.1016/j.paid.2018.03.020>
- [62] Sibley, C. G., Osborne, D. & Duckitt, J. Personality and political orientation: Meta-analysis and test of a Threat-Constraint Model. *Journal of Research in Personality* **46(6)**, 664-677 (2012). <https://doi.org/10.1016/j.jrp.2012.08.002>
- [63] Jost, J. T., Glaser, J., Kruglanski, A. W. & Sulloway, F. J. Political conservatism as motivated social cognition. *Psychological Bulletin* **129(3)**, 339-375 (2003).  
<https://doi.org/10.1037/0033-2909.129.3.339>
- [64] Huber, J. D. Values and partisanship in left-right orientations: Measuring ideology. *European Journal of Political Research* **17(5)**, 599-621 (1989).  
<https://doi.org/10.1111/j.1475-6765.1989.tb00209.x>
- [65] Bauer, P. C., Barberá, P., Ackermann, K. & Venetz, A. Is the left-right scale a valid measure of ideology? *Political Behavior* **39(3)**, 553-583 (2017). <https://doi.org/10.1007/s11109-016-9368-2>
- [66] Malka, A., Soto, C. J., Inzlicht, M. & Leles, Y. Do needs for security and certainty predict cultural and economic conservatism? A cross-national analysis. *Journal of Personality and Social Psychology* **106(6)**, 1031-1051 (2014). <https://doi.org/10.1037/a0036170>
- [67] Bakker, R. et al. 2014 Chapel Hill Expert Survey. Chapel Hill, NC: University of North Carolina, Chapel Hill. [www.chesdata.eu](http://www.chesdata.eu) (2015).

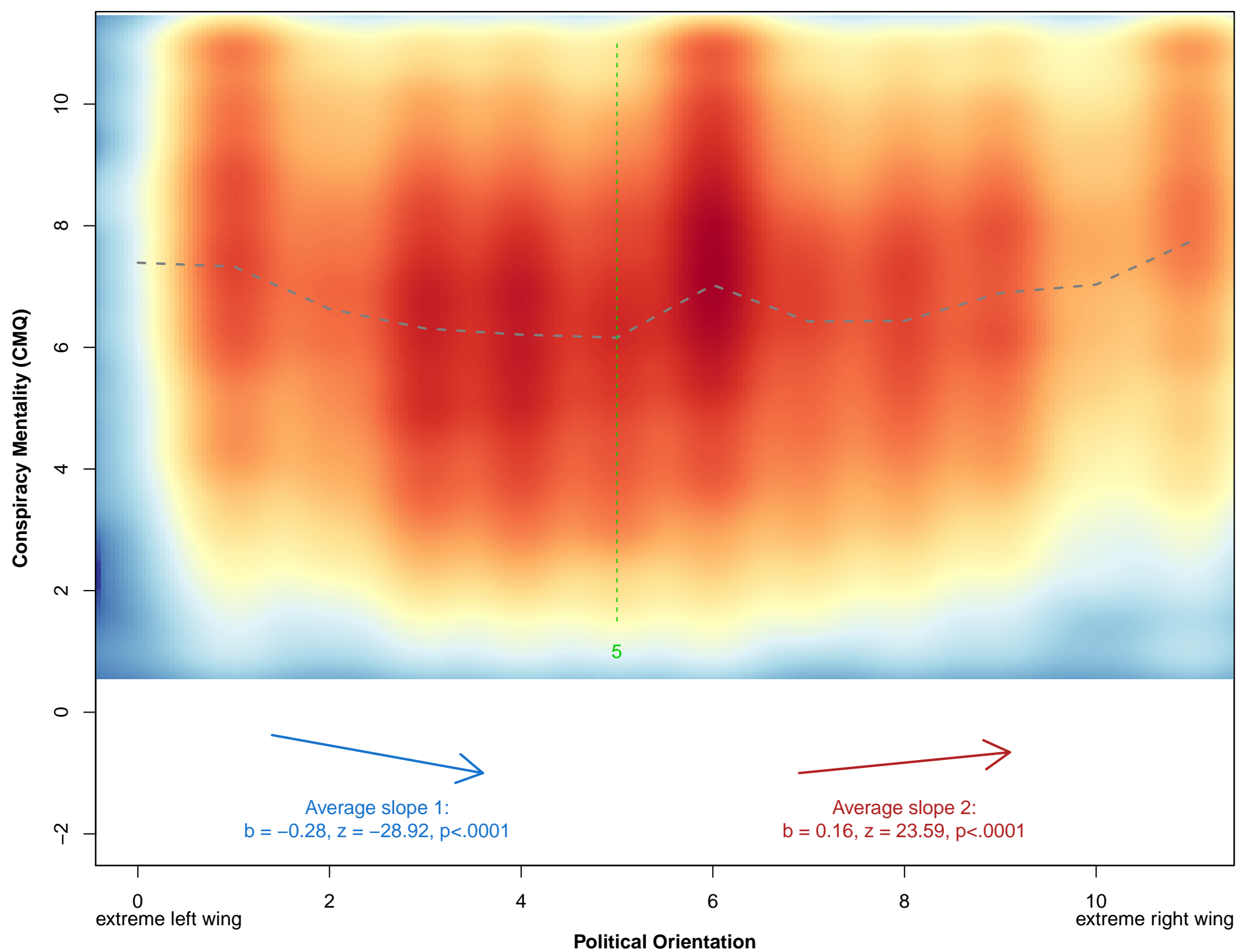
- [68] Simonsohn, U. Two lines: A valid alternative to the invalid testing of U-shaped relationships with quadratic regressions. *Advances in Methods and Practices in Psychological Science* **1(4)**, 538-555 (2018). <https://doi.org/10.1177/2515245918805755>
- [69] Jolley, D., Douglas, K. M. & Sutton, R. M. Blaming a few bad apples to save a threatened barrel: The system-justifying function of conspiracy theories. *Political Psychology* **39(2)**, 465-478 (2018). <https://doi.org/10.1111/pops.12404>
- [70] Leone, L., Giacomantonio, M. & Lauriola, M. Moral foundations, worldviews, moral absolutism and belief in conspiracy theories. *International Journal of Psychology* **54(2)**, 197-204 (2019). <https://doi.org/10.1002/ijop.12459>
- [71] Marchlewska, M., Cichocka, A. & Kossowska, M. Addicted to answers: Need for cognitive closure and the endorsement of conspiracy beliefs. *European Journal of Social Psychology* **48(2)**, 109-117 (2018). <https://doi.org/10.1002/ejsp.2308>
- [72] Cichocka, A., Marchlewska, M., Golec de Zavala, A. & Olechowski, M. “They will not control us”: In-group positivity and belief in intergroup conspiracies. *British Journal of Psychology*, **107**, 556-576 (2016). <https://doi.org/10.1111/bjop.12158>
- [73] Imhoff, R. & Lamberty, P. Conspiracy beliefs as psychopolitical reactions to perceived power. In M. Butter & P. Knight (Eds.), *Routledge Handbook of Conspiracy Theories* (pp. 192-205) (Routledge, 2020). [https://doi.org/10.4324/9780429452734-2\\_4](https://doi.org/10.4324/9780429452734-2_4)
- [74] Morisi, D., Jost, J. T. & Singh, V. An Asymmetrical “President-in-Power” Effect. *American Political Science Review* **113(2)**, 614-620 (2019). <https://doi.org/https://doi.org/10.1017/S0003055418000850>
- [75] van Prooijen, J.-W. Why education predicts decreased belief in conspiracy theories. *Applied Cognitive Psychology* **31(1)**, 50–58 (2017). <https://doi.org/10.1002/acp.3301>

- [76] Bognar, E. Hungary. In N. Newman, R. Fletcher, A. Kalogeropoulos, D. A. L. Levy, & R. K. Nielsen (Eds.), *Reuters Institute Digital News Report 2018* (pp. 84-85) (Reuters, 2018).
- [77] Political Capital. Összeesküvés-elméletek, álhírek, Babonák a Magyar közvelemenben. Retrieved on August 31st, 2021 from <https://politicalcapital.hu/pc-admin/source/documents/pc-boll-konteo-20181107.pdf> (2018).
- [78] American Psychological Association. Ethical principles of psychologists and code of conduct (2002, Amended effective June 1, 2010, and January 1, 2017). <http://www.apa.org/ethics/code/index.aspx> (2017).
- [79] Krouwel, A., Kutiyiski, Y. & Thomeczek, P. *EVES: European Voter Election Studies Survey Data* (Kieskompas, 2019).
- [80] Rao, J. N. K., Yung, W. & Hidiroglou, M. A. Estimating equations for the analysis of survey data using poststratification information. *Sankhyā: The Indian Journal of Statistics Series A*, 364-378 (2002).
- [81] Valliant, R. Poststratification and conditional variance estimation. *Journal of the American Statistical Association* **88(421)**, 89-96 (1993).
- [82] Rutkowski, L. & Svetina, D. Assessing the hypothesis of measurement invariance in the context of large-scale international surveys. *Educational and Psychological Measurement* **74(1)**, 31-57 (2014). <https://doi.org/10.1177/0013164413498257>
- [83] Richter, D. & Schupp, J. The SOEP Innovation Sample (SOEP IS). *Schmollers Jahrbuch* **135(3)**, 389–399 (2015). <https://doi.org/10.3790/schm.135.3.389>

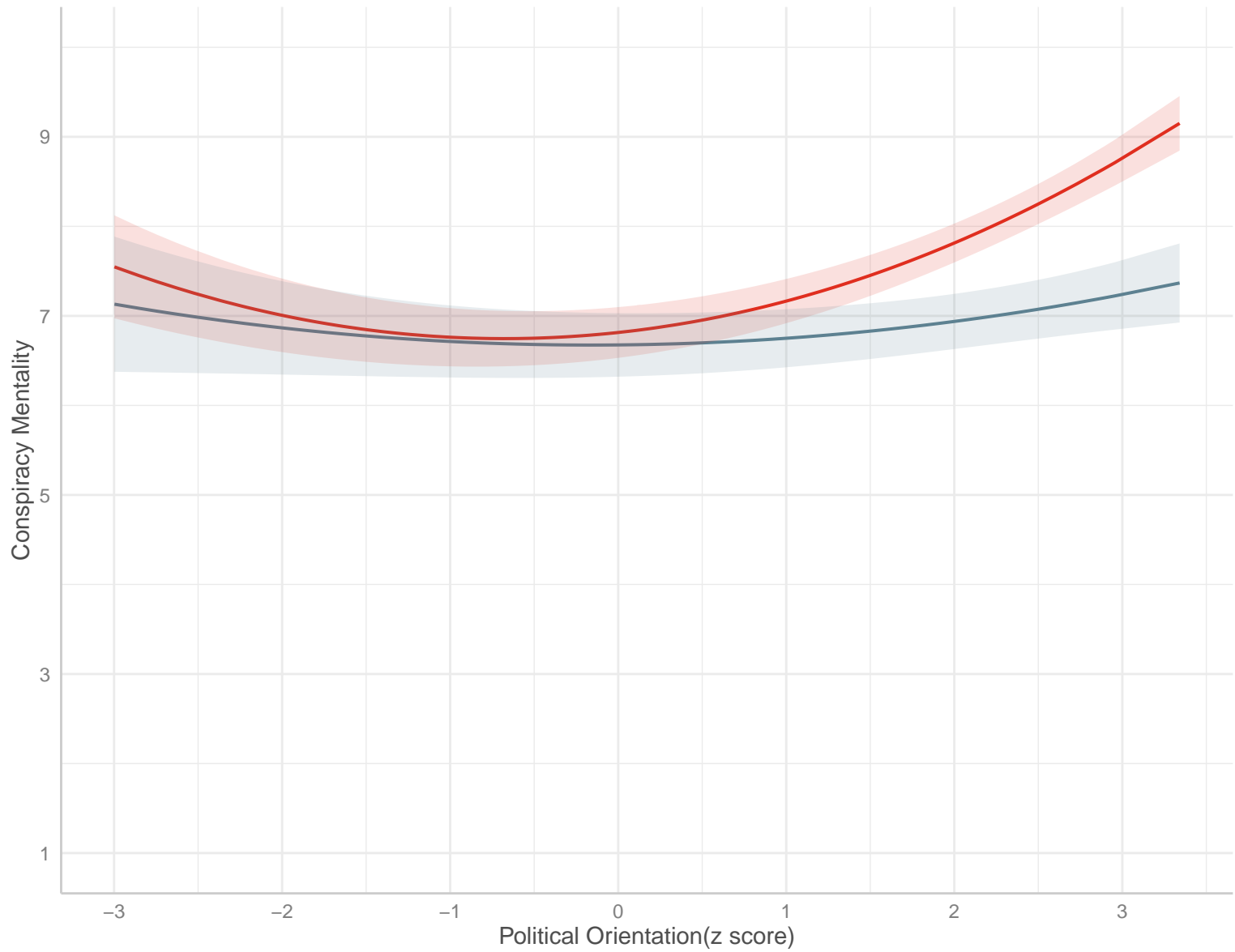








Party intending to vote for in power 0 1



Party voted for in power 0 1

