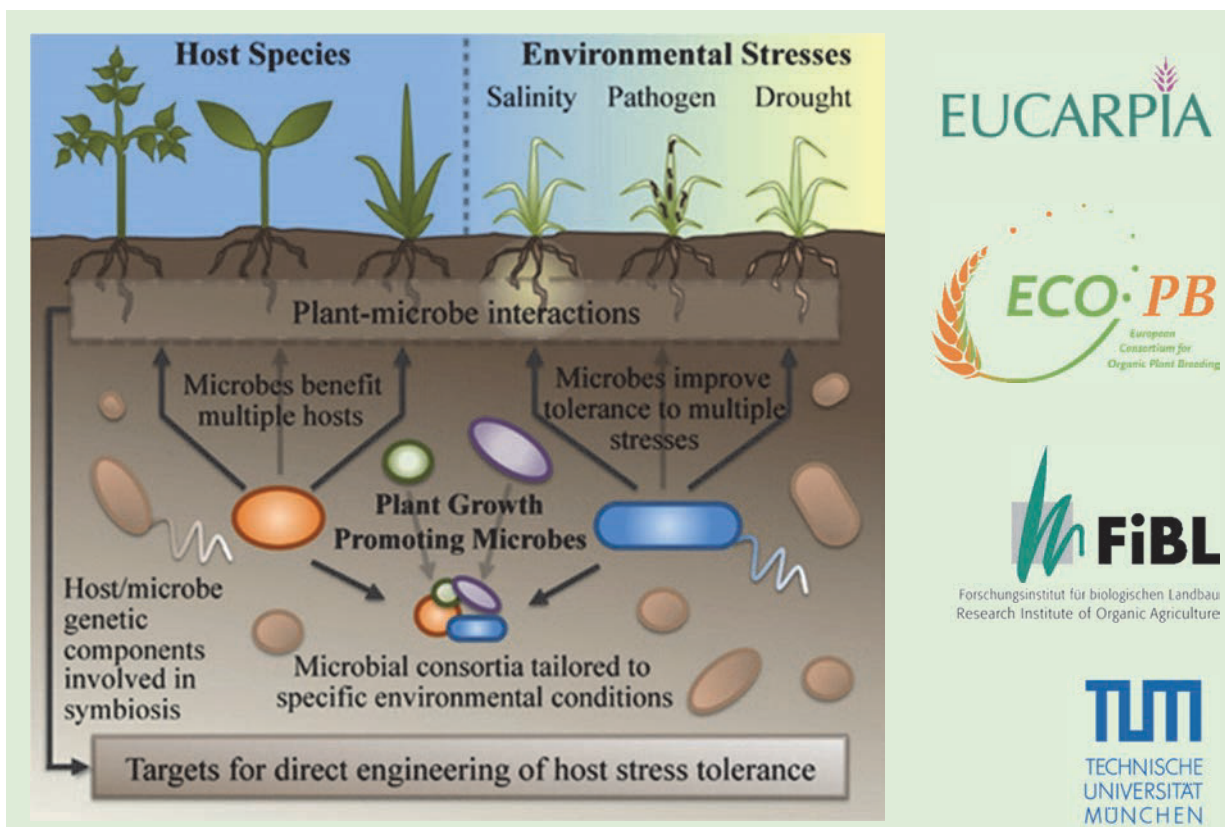


First EUCARPIA Workshop on Implementing Plant – Microbe Interaction in Plant Breeding

25th June - 26th June 2015

Technische Universität München

Freising Weihenstephan, Alte Akademie 8



EUCARPIA Working Group on Plant-Microbe Interactions

Section Organic and Low-Input Agriculture

EFFECTS OF THE INOCULATION WITH SOIL MICROBIOTA ON MAIZE GROWN IN SALINE SOILS

Helena MOREIRA, Sofia A. PEREIRA, Paula M.L. CASTRO*, Ana P.G.C. MARQUES

CBQF – Centro de Biotecnologia e Química Fina, Escola Superior de Biotecnologia, Centro Regional do Porto da Universidade Católica Portuguesa, Rua Dr. António Bernardino Almeida, 4200-072 Porto, Portugal
Presenter (*plcastro@porto.ucp.pt)

Introduction

According to the UN 2010 predictions, the human population will reach 10 billion by 2080. The food and energetic needs will thus increase dramatically, while conventional agriculture is facing drastic reductions in production yields and/or severe increases in cost to compensate losses in productivity due to lower soil fertility. Soil salinity is a serious problem worldwide causing potential loss of fertility, as plants facing salt stress suffer alterations that adversely affect its growth (Parida and Das, 2005).

A possible strategy for coping with salinity may be the use of crops that are able to survive under the installed saline conditions however the growth of particular crops with high economic valorisation in such soils would be disabled. Therefore, amelioration of the growth of plants with high yield, biomass and economical value such as maize (*Zea mays* L.) should be explored. This work aimed evaluating the effectiveness of combinations of microorganisms for the recovery of maize productivity in saline soils.

Material and Methods

In this study a strategy was set that relied on the culture in greenhouse conditions of a high value food and energetic crop (maize) inoculated with soil plant growth promoting microbiota –an arbuscular mycorrhizal fungi (*Rhizophagus irregularis*), and a rizospheric (*Pseudomonas reactans*) and an endophytic (*Pantoea alli*) plant growth promoting bacteria (PGPB), exposed to soils with different salinity levels (0, 2.5 and 5 mg NaCl kg⁻¹). A randomized design of 5 treatments for each tested concentration was conducted as follows: 0) non-inoculated control soil with maize ; B) soil with maize inoculated with *P. reactans*; F) soil with maize inoculated with *R. irregularis*; E) soil with maize inoculated with *P. alli*; and MIX) soil with maize inoculated with *R. irregularis*, *P. reactans* and *P.alli*.

Roots and shoots of maize plants were harvested 60 days after seeding, washed with deionized water, followed by HCl 0.1 M and again with deionized water. Samples were placed in an oven at 70 °C for 48 h to determine their dry weights. As the work also aimed at relating the effects of bioinoculation with alterations in plant response to salt stress, tissue, root and shoot's samples were then grinded and sieved to <1 mm and digested in a PerkinElmer Microwave 3000 (Waltham, USA) following the 3052 USEPA method. Sodium content was determined using Inducted Couple Plasma by Optic Emission Spectrometry (ICP-OES) of the digests (Wallinga et al., 1989).

Results and Discussion

Increasing salt concentration decreased plant biomass production (Table 1). However, all microbial treatments induced increases in maize shoots and roots biomass, with the mixed inocula (MIX) including all tested microbiota generally outperforming the other treatments.

Table 1: Effects of microbial inoculation and salt concentration on maize biomass (g) (n=4).

SHOOT	sample	biomass (g)			sample	biomass (g)			sample	biomass (g)				
	0C	2,06	±	0,02	^c	2.5C	1,55	±	0,16	^c	5C	0,92	±	0,05
0B	2,68	±	0,28	^b	2.5B	1,74	±	0,09	^b	5B	1,39	±	0,12	^b
0F	2,40	±	0,36	^b	2.5F	2,41	±	0,06	^a	5F	1,50	±	0,08	^b
0E	2,65	±	0,23	^b	2.5E	1,90	±	0,08	^b	5E	1,40	±	0,15	^b
0MIX	3,00	±	0,11	^a	2.5MIX	2,32	±	0,08	^a	5MIX	1,86	±	0,13	^a
F=11,158 (sig=0)				F=69,501 (sig=0)				F=45,943 (sig=0)						
ROOT	sample	biomass (g)			sample	biomass (g)			sample	biomass (g)				
	0C	0,75	±	0,09	^d	2.5C	0,44	±	0,11	^d	5C	0,37	±	0,02
0B	1,14	±	0,09	^b	2.5B	0,54	±	0,08	^c	5B	0,46	±	0,01	^c
0F	1,27	±	0,14	^a	2.5F	0,75	±	0,08	^b	5F	0,57	±	0,02	^b
0E	0,90	±	0,09	^c	2.5E	0,42	±	0,03	^d	5E	0,40	±	0,01	^d
0MIX	1,08	±	0,08	^b	2.5MIX	0,99	±	0,02	^a	5MIX	0,61	±	0,04	^a
F=20,891(sig=0);				F=54,606(sig=0)				F=120,565(sig=0)						

Concerning sodium uptake by maize, it increased with increasing soil concentrations, being the accumulations in roots and shoots generally of the similar order. Generally, microbial inoculation prevented Na uptake in maize roots or shoots, and again the treatment with the mixture of all tested organisms (MIX) showed significantly ($P < 0.05$) higher effects, although in some cases treatment with *Rhizopagus irregularis* (F) showed a similar effect.

Table 2: Effects of microbial inoculation and salt concentration in sodium uptake (g/kg plant fry weight) by maize (n=4).

SHOOT	sample	Na (g/kg)			sample	Na (g/kg)			sample	Na (g/kg)				
	0C	0,018	±	0,004	^{ab}	2.5C	7,4	±	0,2	^a	5C	13,2	±	1,1
0B	0,021	±	0,001	^a	2.5B	7,2	±	1,2	^a	5B	11,1	±	0,8	^b
0F	0,007	±	0,005	^c	2.5F	4,6	±	0,3	^b	5F	4,7	±	0,4	^d
0E	0,015	±	0,001	^b	2.5E	7,2	±	0,1	^a	5E	9,2	±	0,7	^c
0MIX	0,009	±	0,002	^c	2.5MIX	5,2	±	0,8	^b	5MIX	3,9	±	0,2	^d
F=13,395 (sig=0)				F=11,873 (sig=0)				F=92,763 (sig=0)						
ROOT	sample	Na (g/kg)			sample	Na (g/kg)			sample	Na (g/kg)				
	0C	1,17	±	0,14	^a	2.5C	7,6	±	0,9	^a	5C	11,5	±	1,9
0B	1,06	±	0,1	^{ab}	2.5B	7,3	±	0,7	^a	5B	10	±	0,9	^{ab}
0F	0,93	±	0,04	^{bc}	2.5F	5,8	±	0,8	^b	5F	10,1	±	1,3	^{ab}
0E	1,06	±	0,11	^{ab}	2.5E	5,5	±	0,5	^b	5E	9,06	±	0,7	^{bc}
0MIX	0,76	±	0,08	^c	2.5MIX	5,5	±	0,3	^b	5MIX	7,4	±	0,6	^c
F=7,785(sig=0,001)				F=6,703 (sig=0,003)				F=4,975 (sig=0,009)						

This study supports that adequate inoculation is determinant for the recovery of saline soils, and that a combination of soil microbiota including rhizospheric, endophytic bacteria and mycorrhizal fungi can allow a glycophyte as maize to proliferate in such land, rendering it prone to economic valorisation. The adequate combination of AMF, PGPR and host plants is determinant for the result of their interaction under stress and consequently for their potential use in management of saline soils.

References

- Parida AK, Das AB 2005. Salt tolerance and salinity effects on plants: a review. *Ecotoxicology and Environmental Safety* 60: 324-349.
- Wallinga I, Vark W, Houba VJG, Lee JJ 1989. *Plant Analysis Procedures*. Department of Soil Science and Plant Nutrition, Wageningen: Wageningen Agricultural University, Syllabus.