



Correction to: Endothelial dysfunction in cardiovascular diseases: mechanisms and in vitro models

Ana Grego¹ · Cristiana Fernandes^{1,2} · Ivo Fonseca¹ · Marina Dias-Neto^{1,3} · Raquel Costa⁴ · Adelino Leite-Moreira^{1,5} · Sandra Marisa Oliveira¹ · Fábio Trindade¹ · Rita Nogueira-Ferreira¹

© The Author(s) 2025

Correction to:

Molecular and Cellular Biochemistry (2025)

480:4671–4695

<https://doi.org/10.1007/s11010-025-05289-w>

In the original article the specific errors are as follows:

The sentences “Moreover, cardiac endothelium’s main energetic pathway is mitochondrial fatty acid oxidation [30]. In fact, it has been shown that genes that regulate fatty acid uptake, such as the Meox2/Tcf15, Fabp4, and Cd36, are highly upregulated in mice cardiac ECs [31]. In turn, ECs from the vascular endothelium (from both the macro and microcirculation) produce ATP mainly by glycolysis [32].” should be replaced by:

“Moreover, cardiac endothelium plays a crucial role in fatty acid uptake for cardiomyocytes, whose main energetic pathway is mitochondrial fatty acid oxidation [30]. In fact, it has been shown that genes that regulate fatty acid uptake, such as the Meox2/Tcf15, Fabp4, and Cd36, are highly upregulated in mice cardiac ECs [31]. ECs from the vascular endothelium (from both the macro and microcirculation) produce ATP mainly by glycolysis [32].”

Also, Fig. 1 should be replaced to remove the points “Predominant glycolysis” and “Predominant fatty acid oxidation”.

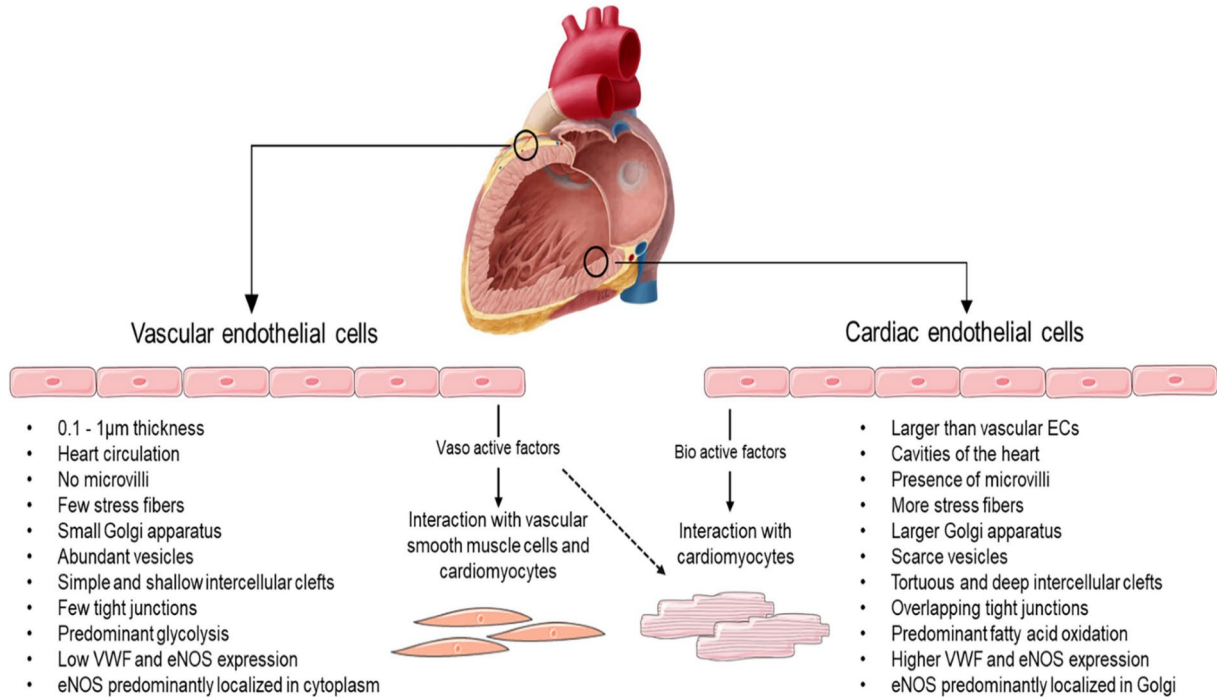
The original article can be found online at <https://doi.org/10.1007/s11010-025-05289-w>.

Ana Grego and Cristiana Fernandes have equally contributed to this work.

✉ Rita Nogueira-Ferreira
rmferreira@med.up.pt

- ¹ RISE-Health, Department of Surgery and Physiology, Faculty of Medicine, University of Porto, Alameda Prof. Hernâni Monteiro, 4200-319 Porto, Portugal
- ² LAQV-REQUIMTE, Department of Chemistry, University of Aveiro, 3810-193 Aveiro, Portugal
- ³ Department of Angiology and Vascular Surgery, Unidade Local de Saúde de São João, Alameda Prof. Hernâni Monteiro, 4200-319 Porto, Portugal
- ⁴ Universidade Católica Portuguesa, CBQF-Centro de Biotecnologia e Química Fina-Laboratório Associado, Escola Superior de Biotecnologia, Rua Diogo Botelho 1327, 4169-005 Porto, Portugal
- ⁵ Department of Cardiothoracic Surgery, Unidade Local de Saúde de São João, Alameda Prof. Hernâni Monteiro, 4200-319 Porto, Portugal

The Incorrect version of Fig. 1:



The Corrected version of Fig. 1:

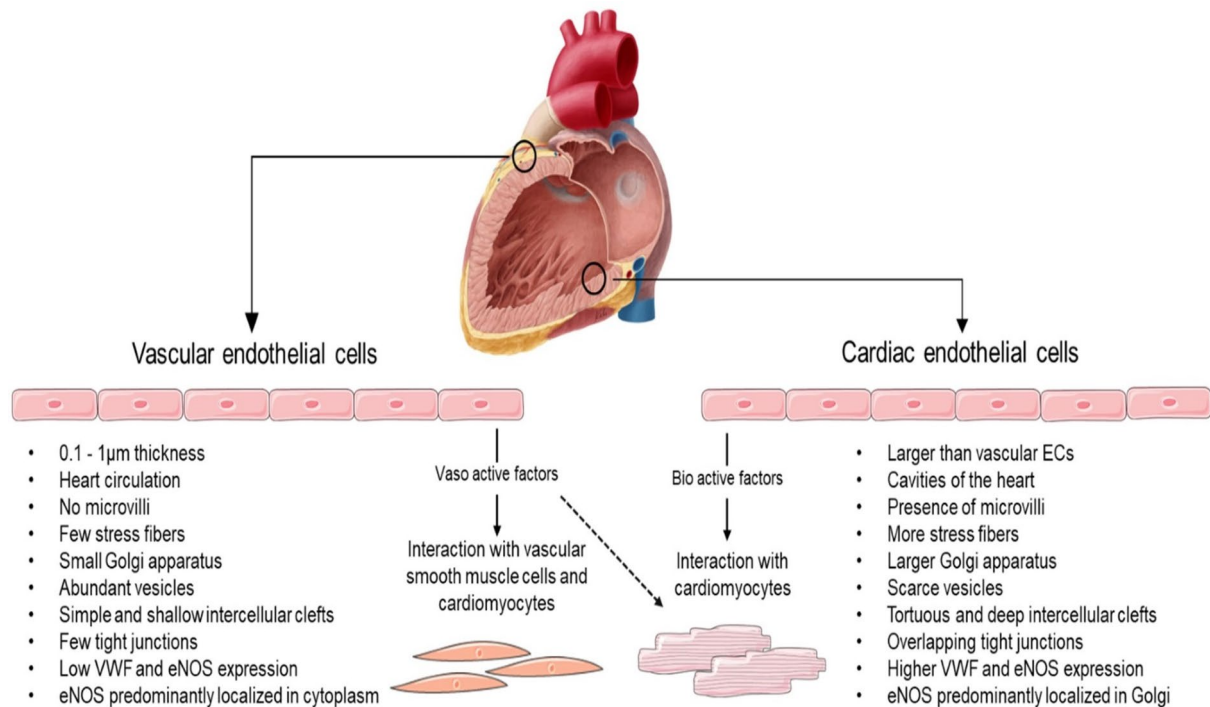


Fig. 1 Characteristics of vascular and cardiac endothelial cells. Created with Smart Servier Medical Art (<https://smart.servier.com/>)

The original article has been corrected.

Open Access This article is licensed under a Creative Commons Attribution 4.0 International License, which permits use, sharing, adaptation, distribution and reproduction in any medium or format, as long as you give appropriate credit to the original author(s) and the source, provide a link to the Creative Commons licence, and indicate if changes were made. The images or other third party material in this article are included in the article's Creative Commons licence, unless indicated otherwise in a credit line to the material. If material is not included in

the article's Creative Commons licence and your intended use is not permitted by statutory regulation or exceeds the permitted use, you will need to obtain permission directly from the copyright holder. To view a copy of this licence, visit <http://creativecommons.org/licenses/by/4.0/>.

Publisher's Note Springer Nature remains neutral with regard to jurisdictional claims in published maps and institutional affiliations.